

Locking units



AVENTICS™

**AVENTICS Series LU6 Locking
units**


EMERSON™

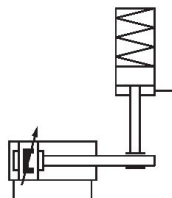
Locking units

The AVENTICS Series LU6 is a mechanical locking unit/brake for piston rods in pneumatic cylinders according to ISO 15552 or comparable round bars. It is a safety component in accordance with the Machinery Directive 2006/42/EC (CE mark) and can be used in safety-relevant controls.

- Tested and certified by IFA as a pneumatic braking/holding unit with safety function as per DIN ISO 13849
- Prevention of hazardous movement (cat. 1 up to max. PL c, "proven component")
- Secure hold in upper end position through clamping and one-sided pressurization (cat. 4 up to max. PL e)
- Interruption of a hazardous movement (emergency stop)
- High B10d -dynamic braking values: 2 million cycles
- High B10d -static holding values: 5 million cycles

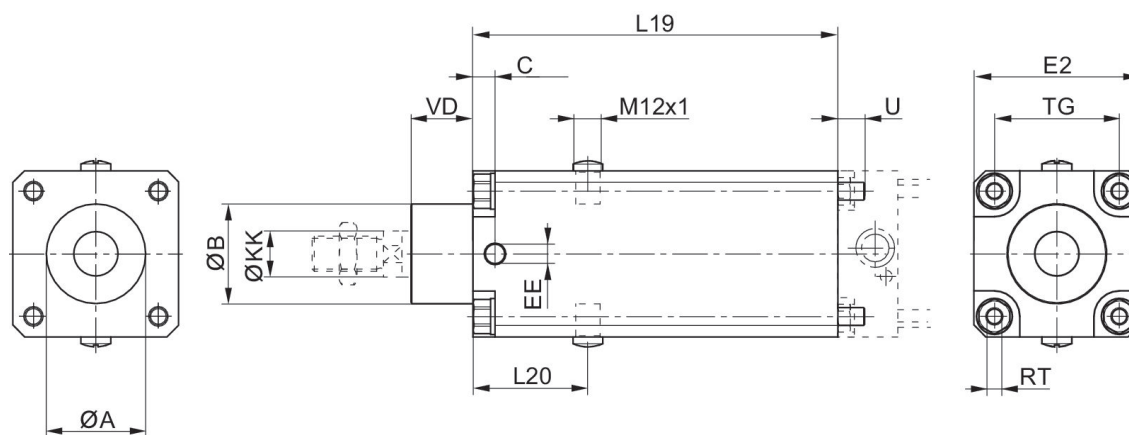


Locking unit, Series LU6



Piston Ø [mm]	suitable piston rod diameter [mm]	Piston rod extension [mm]	Compressed air connection	Min. release pressure [bar]	Max. release pressure [bar]	Required flow rate Qn [l/min]	Max. torsional moment of piston rod [Nm]	Part No.
32	12	125	G 1/8	4	10	50	0.5	5230996402
40	16	125	G 1/8	4	10	70	1	5231996402
50	20	145	G 1/8	4	10	140	2	5232996402
63	20	165	G 1/8	4	10	240	2.5	5233996402
80	25	185	G 1/8	4	10	450	5	5234996402
100	25	220	G 1/8	4	10	700	9	5235996402
125	32	220	G 1/4	4	10	1200	15	5236996402

Dimensions



Piston Ø	Part No.	ØA	ØB d11	C	EE	E2	L19	L20	ØKK e8-h9	TG
32	5230996402	30,5	30	9	G1/8	48	125	44	12	32,5
40	5231996402	35,5	35	9	G1/8	53	125	44	16	38
50	5232996402	40,5	40	9	G1/8	63	145	49	20	46,5
63	5233996402	45,5	45	10	G1/8	75	165	52	20	56,5
80	5234996402	45,5	45	11	G1/8	98	185	61.5	25	72
100	5235996402	55,5	55	13	G1/8	118	220	68	25	89
125	5236996402	60,5	60	13	G1/4	142	220	75	32	110

Piston Ø	RT	U	VD
32	M6	10	19
40	M6	10	21
50	M8	11	28
63	M8	11	28
80	M10	16	34
100	M10	16	37
125	M12	16	45

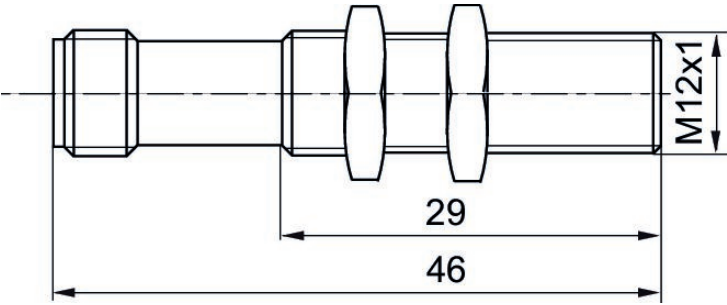
Sensor, Series IN1

DIN EN 60947-5-2
LU6
Plug
M12x1
cULus



Min. operat- ing voltage DC [V DC]	Max. operat- ing voltage DC [V DC]	Max. switch- ing distance	Current consumption [mA]	Short circuit resistance	Part No.
10	30	2 mm	10	short circuit resistant, Protected against polar- ity reversal	R412010426

Dimensions



Efficient pneumatic solutions, our program:
cylinders and drives, valves and valve systems,
air supply management



Visit us: [Emerson.com/Aventics](https://www.emerson.com/aventics)

Your local contact: [Emerson.com/contactus](https://www.emerson.com/contactus)



[Emerson.com](https://www.emerson.com)



[Facebook.com/EmersonAutomationSolutions](https://www.facebook.com/EmersonAutomationSolutions)



[LinkedIn.com/company/Emerson-Automation-Solutions](https://www.linkedin.com/company/Emerson-Automation-Solutions)



[Twitter.com/EMR_Automation](https://twitter.com/EMR_Automation)

An example configuration is depicted on the title page. The delivered product may thus vary from that in the illustration. Subject to change. This Document, as well as the data, specifications and other information set forth in it, are the exclusive property of AVENTICS GmbH. It may not be reproduced or given to third parties without its consent. Only use the AVENTICS products shown in industrial applications. Read the product documentation completely and carefully before using the product. Observe the applicable regulations and laws of the respective country. When integrating the product into applications, note the system manufacturer's specifications for safe use of the product. The data specified only serve to describe the product. No statements concerning a certain condition or suitability for a certain application can be derived from our information. The information given does not release the user from the obligation of own judgment and verification. It must be remembered that the products are subject to a natural process of wear and aging.

The Emerson logo is a trademark and service mark of Emerson Electric Co. Brand logotype are registered trademarks of one of the Emerson family of companies. All other marks are the property of their respective owners. © 2019 Emerson Electric Co. All rights reserved.



EMERSON™

CONSIDER IT SOLVED™