

## Dadi per fissaggio cilindro



**AVENTICS™**

**Dadi per fissaggio cilindri  
AVENTICS**

  
**EMERSON™**

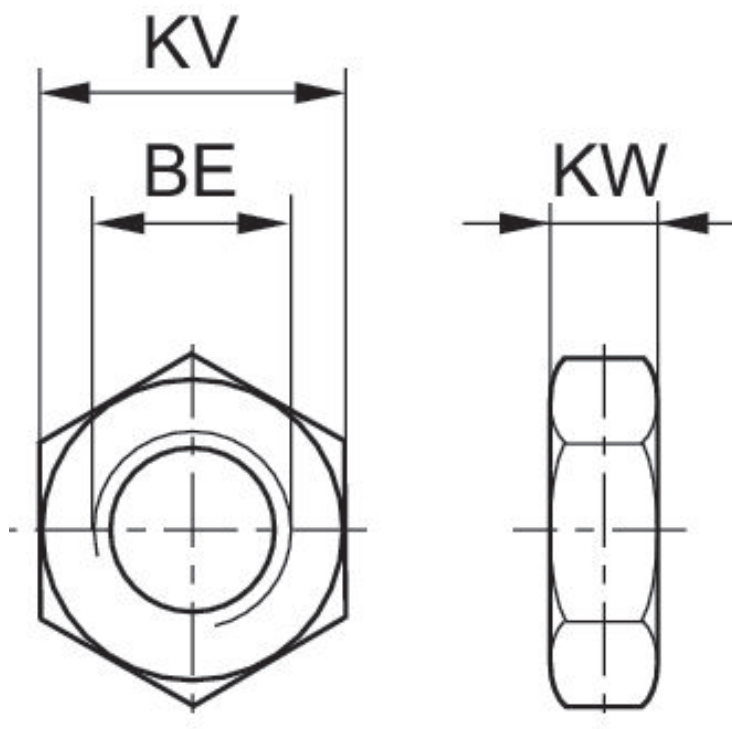
Dadi per fissaggio cilindro



## Dado MR3, serie CM1



Ø Pistone adatto [mm]	Grandezza filettatura	Materiale	Codice
8, 10	M12x1,25	Acciaio, cromato	1823300024
12, 16	M16x1,5	Acciaio, cromato	2915A51204
20, 25	M22x1,5	Acciaio, cromato	2915051207
8, 10	M12x1,25	Poliammide rinforzata in fibra di vetro	0413215803
16	M16x1,5	Poliammide rinforzata in fibra di vetro	0413214505
20, 25	M22x1,5	Poliammide rinforzata in fibra di vetro	0413214602
32	M30x1,5	Poliammide rinforzata in fibra di vetro	0413214718
80	M24x2	Acciaio, cromato	3008010180
60, 85	M24	Acciaio, cromato	3056010180
113, 160	M36x3	Acciaio, cromato	3012010180
250	M48x3	Acciaio, cromato	3075010180
32	M30x1,5	Acciaio, cromato	R412027809
40	M36x1,5	Acciaio, cromato	R412027810
40	M38x1,5	Acciaio, cromato	R412027811
50, 63	M45x1,5	Acciaio, cromato	R412027812
16	M16x1,5	Acciaio inox	2918540030
20, 25	M22x1,5	Acciaio inox	R913030290

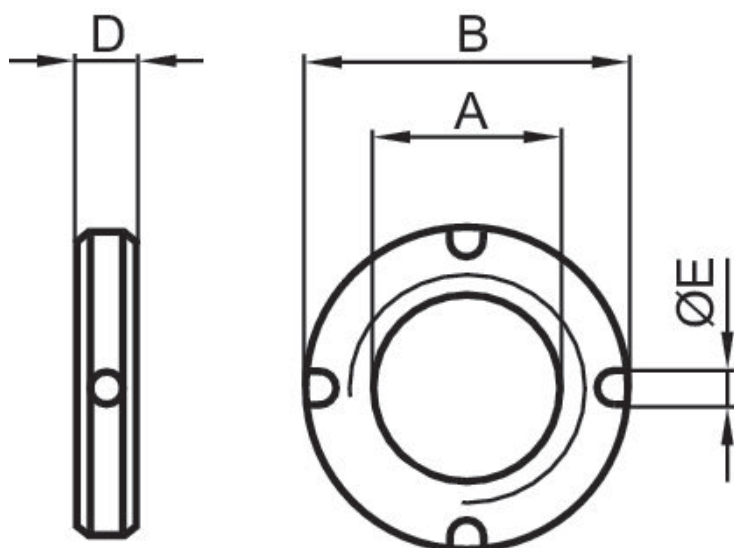


Ø pistone	Codice	Per serie	BE	KV	KW
8, 10	1823300024	MNI	M12x1,25	17	5.5
12, 16	2915A51204	MNI	M16x1,5	22	6
20, 25	2915051207	CSL-RD, MNI	M22x1,5	30	7
8, 10	0413215803	ICM	M12x1,25	17	6.75
16	0413214505	ICM	M16x1,5	24	7
16	2918540030	CSL-RD	M16 x1,5	27	8
20, 25	0413214602	ICM	M22 x1,5	30	8
20, 25	R913030290	CSL-RD	M22 x1,5	32	11
32	0413214718	ICM	M30x1,5	41	11
80	3008010180	102	M24x2	36	8
60, 85	3056010180	102	M24	36	8
32	R412027809	102	M30x1,5	36	10
40	R412027810	RPC	M36x1,5	46	10
113, 160	3012010180	102	M36x3	52	10
40	R412027811	RPC	M38x1,5	46	10
50, 63	R412027812	RPC	M45x1,5	60	12
250	3075010180	102	M48x3	65	12

## Dado cilindrico con fori a croce MR3, serie CM1



Ø Pistone adatto [mm]	Grandezza filettatura	Materiale	Codice
32	M30x1,5	Acciaio, cromato	8915308704
40	M38x1,5	Acciaio, cromato	8915307604
50, 63	M45x1,5	Acciaio, cromato	8915309004



Ø pistone	Codice	A	Ø B	D	E
32	8915308704	M30x1,5	38	8	4
40	8915307604	M38x1,5	50	10	5
50, 63	8915309004	M45x1,5	55	10	5

# Efficient pneumatic solutions, our program: cylinders and drives, valves and valve systems, air supply management



Visit us: [Emerson.com/Aventics](https://www.emerson.com/aventics)

Your local contact: [Emerson.com/contactus](https://www.emerson.com/contactus)



[Emerson.com](https://www.emerson.com)



[Facebook.com/EmersonAutomationSolutions](https://www.facebook.com/EmersonAutomationSolutions)



[LinkedIn.com/company/Emerson-Automation-Solutions](https://www.linkedin.com/company/Emerson-Automation-Solutions)



[Twitter.com/EMR\\_Automation](https://twitter.com/EMR_Automation)

An example configuration is depicted on the title page. The delivered product may thus vary from that in the illustration. Subject to change. This Document, as well as the data, specifications and other information set forth in it, are the exclusive property of AVENTICS GmbH. It may not be reproduced or given to third parties without its consent. Only use the AVENTICS products shown in industrial applications. Read the product documentation completely and carefully before using the product. Observe the applicable regulations and laws of the respective country. When integrating the product into applications, note the system manufacturer's specifications for safe use of the product. The data specified only serve to describe the product. No statements concerning a certain condition or suitability for a certain application can be derived from our information. The information given does not release the user from the obligation of own judgment and verification. It must be remembered that the products are subject to a natural process of wear and aging.

The Emerson logo is a trademark and service mark of Emerson Electric Co. Brand logotype are registered trademarks of one of the Emerson family of companies. All other marks are the property of their respective owners. © 2019 Emerson Electric Co. All rights reserved.



**CONSIDER IT SOLVED™**