

Serie UPG



Serie UPG

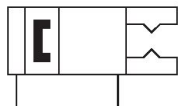
Die Serie UPG von AVENTICS sind 2-Finger-Parallelgreifer, die sich durch hohe Greifkräfte, Präzision und exakte Bewegung der Spannbacken auszeichnen. Sie können je nach Anforderung der Applikation gewählt und mit objektspezifischen Greiffingern flexibel ausgerüstet werden.

- 2-Finger, Parallelgreifer
- mit Magnetkolben



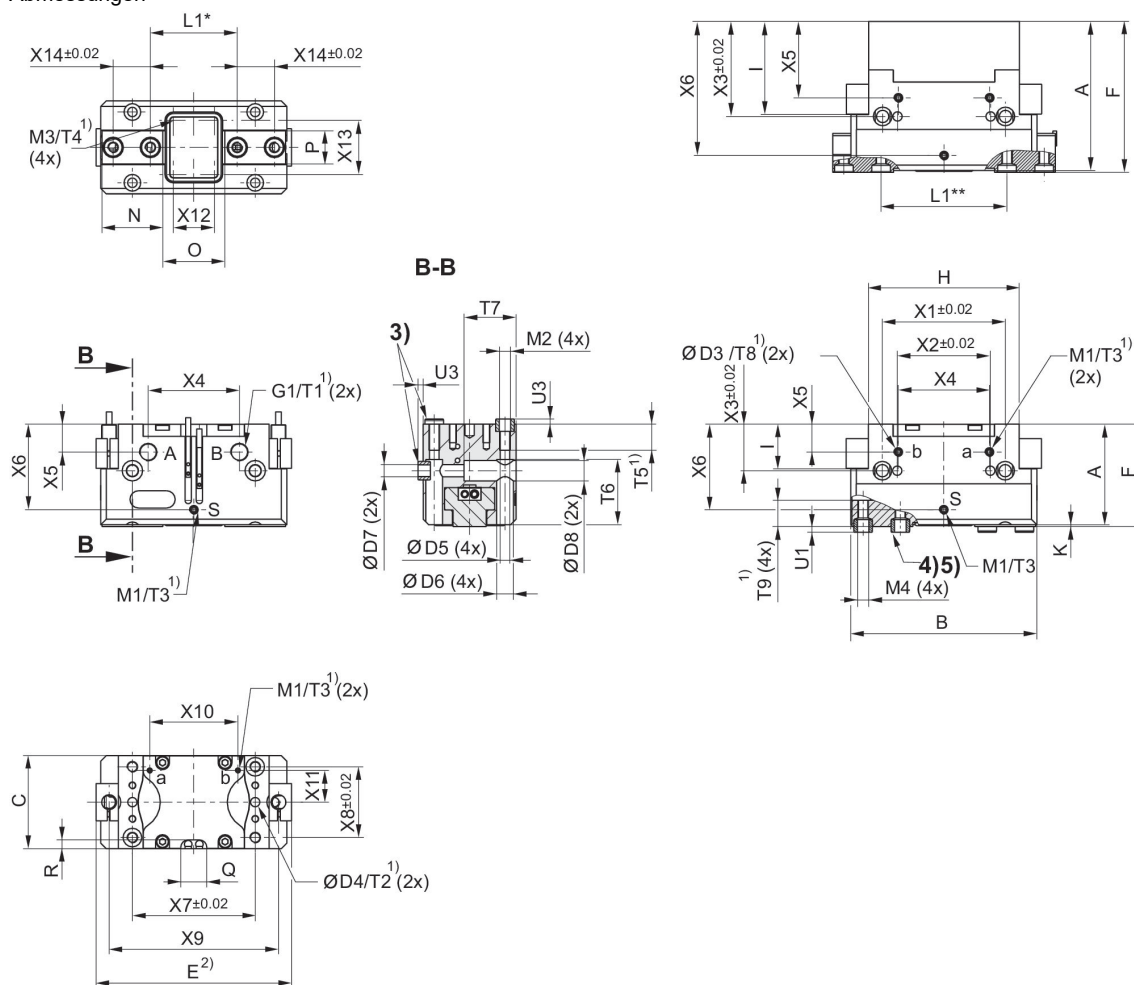
Serie UPG

mit Magnetkolben
2-Finger, Parallelgreifer



| Typ | Effektive Greifkraft Innengreifer pro Finger, min. [N] | Effektive Greifkraft Außengreifer pro Finger, min. [N] | Effektive Gesamtgreifkraft Innengreifer, min. [N] | Effektive Gesamtgreifkraft Außengreifer, min. [N] | max. zul. Fingerlänge [mm] | max. zul. Fingermasse [kg] | Hub je Finger [mm] | Schließzeiten bei 6 bar [s] | Öffnungszeiten bei 6 bar [s] | Empf. Werkstückmasse [kg] | Luftverbrauch pro Doppelhub bei 1 bar [cm³] | Gewicht [kg] | Materialnummer |
|-----------|--|--|---|---|----------------------------|----------------------------|--------------------|-----------------------------|------------------------------|---------------------------|---|--------------|----------------|
| UPG-P-40 | 66 | 61.5 | 132 | 123 | 50 | 0.1 | 2.5 | 0.02 | 0.02 | 0.62 | 2.5 | 0.08 | R412026301 |
| UPG-P-50 | 72.5 | 70 | 145 | 140 | 64 | 0.18 | 4 | 0.02 | 0.02 | 0.7 | 5 | 0.15 | R412026302 |
| UPG-P-64 | 135 | 125 | 270 | 250 | 80 | 0.35 | 6 | 0.03 | 0.03 | 1.25 | 10 | 0.28 | R412026303 |
| UPG-P-80 | 232.5 | 207.5 | 465 | 415 | 100 | 0.6 | 8 | 0.04 | 0.04 | 2.1 | 22.5 | 0.5 | R412026304 |
| UPG-P-100 | 362.5 | 330 | 725 | 660 | 125 | 1.1 | 10 | 0.07 | 0.07 | 3.3 | 45 | 0.81 | R412026305 |
| UPG-P-125 | 585 | 540 | 1170 | 1080 | 160 | 2.1 | 13 | 0.1 | 0.1 | 5.4 | 87 | 1.35 | R412026306 |
| UPG-P-160 | 885 | 820 | 1770 | 1640 | 200 | 3.5 | 16 | 0.15 | 0.15 | 8.2 | 164 | 2.6 | R412026307 |

Abmessungen



* Greifer geschlossen

** Greifer geöffnet

1) min.

2) max.

3) Hülse ØD2 h6 ØD2 in Gehäuse für Greiferanschluss unten (2x)

4) Hülse ØD1 h6 ØD1 H7 in Grundbacke für Fingeranschluss unten (4x)

5) Hülse ØD1 h6 ØD1 in Grundbacke für Fingeranschluss unten (4x)

| Material-nummer | A | B | C | D1 H7 | D2 H7 | D3 H7 | D4 H7 | D5 | D6 | D7 |
|-----------------|----|-----|----|-------|-------|-------|-------|-----|------|-----|
| R412026301 | 24 | 45 | 24 | 4 | 5 | - | - | 2,5 | 4,8 | 2,6 |
| R412026302 | 30 | 57 | 30 | 5 | 6 | - | - | 3,3 | 5,8 | 3,3 |
| R412026303 | 38 | 64 | 36 | 6 | 8 | 4 | 4 | 4,2 | 7,25 | 4,2 |
| R412026304 | 48 | 80 | 42 | 8 | 8 | - | 4 | 4,2 | 7,25 | 5,1 |
| R412026305 | 54 | 100 | 50 | 10 | 10 | 5 | 5 | 5,1 | 9 | 6,6 |
| R412026306 | 62 | 125 | 60 | 10 | 12 | 6 | 6 | 6,8 | 10,5 | 9 |
| R412026307 | 76 | 160 | 72 | 14 | 12 | 6 | 6 | 6,8 | 10,5 | 9 |

| Material-nummer | D8 | E | F | G1 | H | I | K | L1* | L1** | M1 |
|-----------------|-----|---|------|----|----|---|-----|------|------|----|
| R412026301 | 4.8 | - | 24.7 | M3 | 38 | 9 | 0.7 | 26.5 | 21.5 | M2 |

| Material-nummer | D8 | E | F | G1 | H | I | K | L1* | L1** | M1 |
|-----------------|------|-------|----|------|-----|----|---|------|------|----|
| R412026302 | 5,8 | - | 31 | M5 | 42 | 13 | 1 | 33,5 | 25,5 | M5 |
| R412026303 | 7,25 | 70 | 39 | M5 | 52 | 15 | 1 | 40,5 | 28,5 | M5 |
| R412026304 | 9 | 87 | 49 | M5 | 63 | 20 | 1 | 53 | 37 | M5 |
| R412026305 | 11 | 105 | 55 | G1/8 | 81 | 24 | 1 | 67 | 47 | M5 |
| R412026306 | 14 | 130 | 63 | G1/8 | 100 | 26 | 1 | 87 | 61 | M5 |
| R412026307 | 14 | 162,5 | 77 | G1/8 | 125 | 32 | 1 | 109 | 77 | M5 |

| Material-nummer | M2 | M3 | M4 | N | O | P | Q | R | T1 | T2 |
|-----------------|----|------|------|------|------|------|-----|-----|-----|----|
| R412026301 | M3 | M2 | M2.5 | 14.8 | 14.9 | 6.8 | 9.5 | 3.5 | 4 | - |
| R412026302 | M4 | M2,5 | M3 | 18,6 | 19 | 10 | 9,5 | 3,8 | 4,5 | - |
| R412026303 | M5 | M2,5 | M4 | 21 | 20,3 | 12 | 11 | 4,3 | 6 | 6 |
| R412026304 | M5 | M2,5 | M5 | 26 | 26,8 | 14,4 | 12 | 4,2 | 6 | 8 |
| R412026305 | M6 | M3 | M6 | 32,7 | 33,3 | 17,8 | 14 | 4,8 | 7 | 6 |
| R412026306 | M8 | M3 | M6 | 39 | 45,5 | 19,7 | 14 | 4,3 | 7 | 10 |
| R412026307 | M8 | M3 | M10 | 50 | 57,9 | 26 | 16 | 5,3 | 7 | 12 |

| Material-nummer | T3 | T4 | T5 | T6 | T7 | T8 | T9 | U1 | U3 | X1 |
|-----------------|----|-----|----|------|----|----|------|-----|-----|-----|
| R412026301 | 4 | 3.5 | 8 | 16 | 14 | - | 6.1 | 2.2 | 2 | 32 |
| R412026302 | 6 | 3.5 | 11 | 19 | 18 | - | 8,5 | 2.2 | 2,5 | 35 |
| R412026303 | 6 | 3.5 | 12 | 24,1 | 25 | 5 | 10 | 2.6 | 2,5 | 42 |
| R412026304 | 4 | 3.5 | 15 | 33 | 24 | - | 10 | 2.6 | 2,5 | 52 |
| R412026305 | 6 | 5,5 | 14 | 35 | 28 | 5 | 14,2 | 3.1 | 3 | 66 |
| R412026306 | 6 | 5,5 | 20 | 39,5 | 38 | 6 | 13 | 3.1 | 3 | 82 |
| R412026307 | 6 | 5,5 | 20 | 55,5 | 41 | 7 | 17 | 4 | 3 | 100 |

| Material-nummer | X2 | X3 | X4 | X5 | X6 | X7 | X8 | X9 | X10 | X11 |
|-----------------|----|------|----|----|------|-----|----|-------|------|------|
| R412026301 | - | 11 | 22 | 8 | 18.6 | 32 | 18 | - | 20 | 6.8 |
| R412026302 | - | 14,5 | 24 | 10 | 25,5 | 35 | 22 | - | 22,6 | 8,7 |
| R412026303 | 20 | 17,5 | 31 | 10 | 33 | 42 | 27 | 58,6 | 27 | 10 |
| R412026304 | - | 20 | 40 | 12 | 39,5 | 52 | 32 | 73 | 37 | 12 |
| R412026305 | 50 | 25 | 49 | 15 | 46 | 66 | 38 | 91 | 47,4 | 17 |
| R412026306 | 60 | 30 | 63 | 15 | 53 | 82 | 45 | 116 | 61 | 20 |
| R412026307 | 76 | 28 | 74 | 18 | 61 | 100 | 56 | 148,5 | 75 | 24,5 |

| Material-nummer | X12 | X13 | X14 |
|-----------------|------|------|-----|
| R412026301 | 8 | 14 | 8 |
| R412026302 | 11 | 18 | 12 |
| R412026303 | 13 | 20,5 | 13 |
| R412026304 | 17 | 14,4 | 16 |
| R412026305 | 22 | 17,8 | 20 |
| R412026306 | 35,5 | 19,7 | 24 |
| R412026307 | 43 | 31 | 32 |

* Greifer geöffnet

** Greifer geschlossen

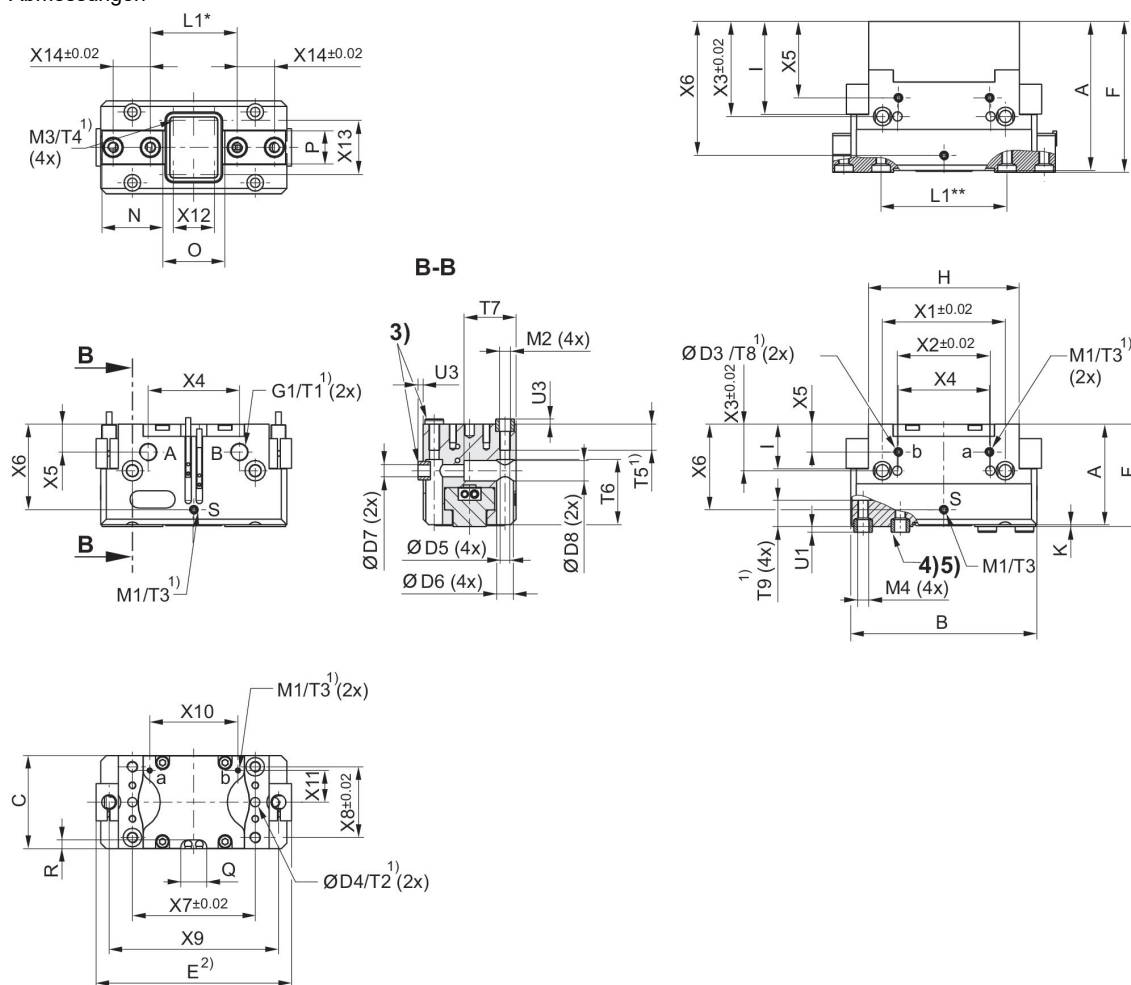
Serie UPG

mit Magnetkolben
doppeltwirkend, drucklos geschlossen
2-Finger, Parallelgreifer



| Typ | Effektive Greifkraft Außengreifer pro Finger, min. [N] | Effektive Gesamtgreifkraft Außengreifer, min. [N] | max. zul. Fingerlänge [mm] | max. zul. Finger-masse [kg] | Hub je Finger [mm] | Schließzeiten bei 6 bar [s] | Öffnungszeiten bei 6 bar [s] | Empf. Werkstück-masse [kg] | Luftverbrauch pro Doppelhub bei 1 bar [cm ³] | Gewicht [kg] | Materialnummer |
|--------------|--|---|----------------------------|-----------------------------|--------------------|-----------------------------|------------------------------|----------------------------|--|--------------|----------------|
| UPG-P-40-NC | 81 | 163 | 45 | 0.1 | 2.5 | 0.02 | 0.03 | 0.62 | 4.5 | 0.09 | R412026308 |
| UPG-P-50-NC | 92 | 185 | 58 | 0.18 | 4 | 0.02 | 0.03 | 0.7 | 8.5 | 0.2 | R412026309 |
| UPG-P-64-NC | 170 | 340 | 72 | 0.35 | 6 | 0.02 | 0.04 | 1.25 | 17 | 0.37 | R412026310 |
| UPG-P-80-NC | 285 | 570 | 90 | 0.6 | 8 | 0.03 | 0.05 | 2.1 | 36 | 0.6 | R412026311 |
| UPG-P-100-NC | 450 | 900 | 115 | 1.1 | 10 | 0.05 | 0.09 | 3.3 | 79 | 1 | R412026312 |
| UPG-P-125-NC | 735 | 1470 | 145 | 2.1 | 13 | 0.08 | 0.12 | 5.4 | 119 | 1.85 | R412026313 |
| UPG-P-160-NC | 1105 | 2210 | 180 | 3.5 | 16 | 0.12 | 0.25 | 8.2 | 210 | 3.3 | R412026314 |

Abmessungen



* Greifer geschlossen

** Greifer geöffnet

1) min.

2) max.

3) Hülse ØD2 h6 ØD2 in Gehäuse für Greiferanschluss unten (2x)

4) Hülse ØD1 h6 ØD1 H7 in Grundbacke für Fingeranschluss unten (4x)

5) Hülse ØD1 h6 ØD1 in Grundbacke für Fingeranschluss unten (4x)

| Material-nummer | A | B | C | D1 H7 | D2 H7 | D3 H7 | D4 H7 | D5 | D6 | D7 |
|-----------------|-------|-----|----|-------|-------|-------|-------|-----|------|-----|
| R412026308 | 33,05 | 45 | 24 | 4 | 5 | - | - | 2,5 | 4,8 | 2,6 |
| R412026309 | 46 | 57 | 30 | 5 | 6 | - | - | 3,3 | 5,8 | 3,3 |
| R412026310 | 56 | 64 | 36 | 6 | 8 | 4 | 4 | 4,2 | 7,25 | 4,2 |
| R412026311 | 66 | 80 | 42 | 8 | 8 | - | 4 | 4,2 | 7,25 | 5,1 |
| R412026312 | 80 | 100 | 50 | 10 | 10 | 5 | 5 | 5,1 | 9 | 6,6 |
| R412026313 | 92 | 125 | 60 | 10 | 12 | 6 | 6 | 6,8 | 10,5 | 9 |
| R412026314 | 116 | 160 | 72 | 14 | 12 | 6 | 6 | 6,8 | 10,5 | 9 |

| Material-nummer | D8 | E | F | G1 | H | I | K | L1* | L1** | M1 |
|-----------------|-----|---|-------|----|----|------|-----|------|------|----|
| R412026308 | 4.8 | - | 33.75 | M3 | 38 | 18.1 | 0.7 | 26.5 | 21.5 | M2 |

| Material-nummer | D8 | E | F | G1 | H | I | K | L1* | L1** | M1 |
|-----------------|------|-------|-----|------|-----|----|---|------|------|----|
| R412026309 | 5,8 | - | 47 | M5 | 42 | 29 | 1 | 33,5 | 25,5 | M5 |
| R412026310 | 7,25 | 70 | 57 | M5 | 52 | 33 | 1 | 40,5 | 28,5 | M5 |
| R412026311 | 9 | 87 | 67 | M5 | 63 | 38 | 1 | 53 | 37 | M5 |
| R412026312 | 11 | 105 | 81 | G1/8 | 81 | 50 | 1 | 67 | 47 | M5 |
| R412026313 | 14 | 130 | 93 | G1/8 | 100 | 56 | 1 | 87 | 61 | M5 |
| R412026314 | 14 | 162,5 | 117 | G1/8 | 125 | 72 | 1 | 109 | 77 | M5 |

| Material-nummer | M2 | M3 | M4 | N | O | P | Q | R | T1 | T2 |
|-----------------|----|------|------|------|------|------|----|-----|-----|----|
| R412026308 | M3 | M2 | M2.6 | 14.8 | 14.9 | 6.8 | - | - | 4 | - |
| R412026309 | M4 | M2,5 | M3 | 18,6 | 19 | 10 | - | - | 4.5 | - |
| R412026310 | M5 | M2,5 | M4 | 21 | 20,3 | 12 | - | - | 6 | 6 |
| R412026311 | M5 | M2,5 | M5 | 26 | 26,8 | 14,4 | - | - | 6 | 8 |
| R412026312 | M6 | M3 | M6 | 32,7 | 33,3 | 17,8 | - | - | 7 | 6 |
| R412026313 | M8 | M3 | M6 | 39 | 45,5 | 19,7 | - | - | 7 | 10 |
| R412026314 | M8 | M3 | M10 | 50 | 57,9 | 26 | 11 | 5,1 | 7 | 12 |

| Material-nummer | T3 | T4 | T5 | T6 | T7 | T8 | T9 | U1 | U3 | X1 |
|-----------------|----|-----|----|------|----|----|------|-----|-----|-----|
| R412026308 | 4 | 3.5 | 8 | 16 | 14 | - | 7.1 | 2.2 | 2 | 32 |
| R412026309 | 6 | 3.5 | 11 | 19 | 18 | - | 8,5 | 2.2 | 2,5 | 35 |
| R412026310 | 6 | 3.5 | 12 | 24,1 | 25 | 5 | 10 | 2.6 | 2,5 | 42 |
| R412026311 | 4 | 3.5 | 15 | 33 | 24 | - | 10 | 2.6 | 2,5 | 52 |
| R412026312 | 6 | 5,5 | 14 | 35 | 28 | 5 | 14,2 | 3.1 | 3 | 66 |
| R412026313 | 6 | 5,5 | 20 | 39,5 | 38 | 6 | 13 | 3.1 | 3 | 82 |
| R412026314 | 6 | 5,5 | 20 | 55,5 | 41 | 7 | 17 | 4 | 3 | 100 |

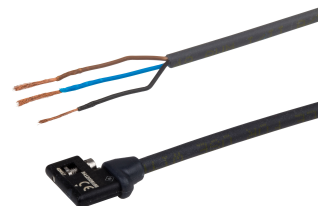
| Material-nummer | X2 | X3 | X4 | X5 | X6 | X7 | X8 | X9 | X10 | X11 |
|-----------------|----|------|----|------|------|-----|----|-------|------|------|
| R412026308 | - | 20.1 | 22 | 17.1 | 27.7 | 32 | 18 | - | 20 | 6.8 |
| R412026309 | - | 30,5 | 24 | 26 | 41,5 | 35 | 22 | - | 22,6 | 8,7 |
| R412026310 | 20 | 35,5 | 31 | 28 | 51 | 42 | 27 | 58,6 | 27 | 10 |
| R412026311 | - | 38 | 40 | 30 | 57,5 | 52 | 32 | 73 | 37 | 12 |
| R412026312 | 50 | 51 | 49 | 41 | 72 | 66 | 38 | 91 | 47,4 | 17 |
| R412026313 | 60 | 60 | 63 | 45 | 83 | 82 | 45 | 116 | 61 | 20 |
| R412026314 | 76 | 68 | 74 | 58 | 101 | 100 | 56 | 148,5 | 75 | 24,5 |

| Material-nummer | X12 | X13 | X14 |
|-----------------|------|------|-----|
| R412026308 | 8 | 14 | 8 |
| R412026309 | 11 | 18 | 12 |
| R412026310 | 13 | 20,5 | 13 |
| R412026311 | 17 | 14,4 | 16 |
| R412026312 | 22 | 17,8 | 20 |
| R412026313 | 35,5 | 19,7 | 24 |
| R412026314 | 43 | 31 | 32 |

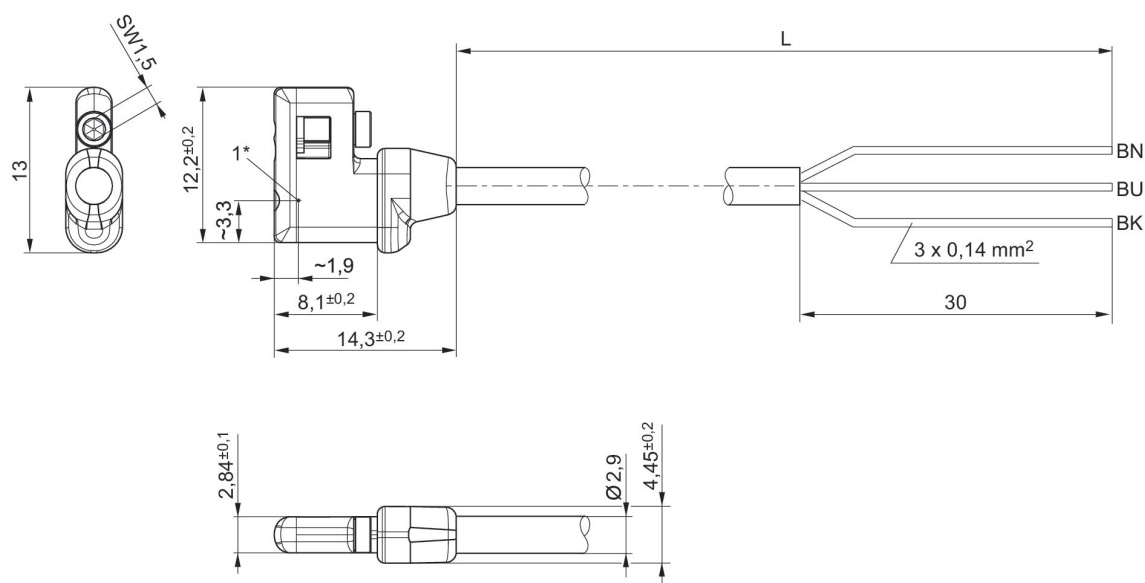
* Greifer geöffnet
** Greifer geschlossen

Sensor, Serie SC4

UPG
RTC
MSN
GPC
MSC
PRA
SSI
TWC
Aderenden verzinkt
CE-Konformitätserklärung
cULus
UL (Underwriters Laboratories)



| Direktmontage für Serie | Nutbreite | Kontaktart | Elektrischer Anschluss Anzahl Pole | Materialnummer |
|--|------------|------------------|------------------------------------|----------------|
| UPG, RTC, MSN, GPC, MSC, PRA, SSI, TWC | 4 mm C-Nut | elektronisch PNP | 3-polig | R412026162 |
| UPG, RTC, MSN, GPC, MSC, PRA, SSI, TWC | 4 mm C-Nut | elektronisch PNP | 3-polig | R412026163 |
| UPG, RTC, MSN, GPC, MSC, PRA, SSI, TWC | 4 mm C-Nut | NPN | 3-polig | R412026166 |



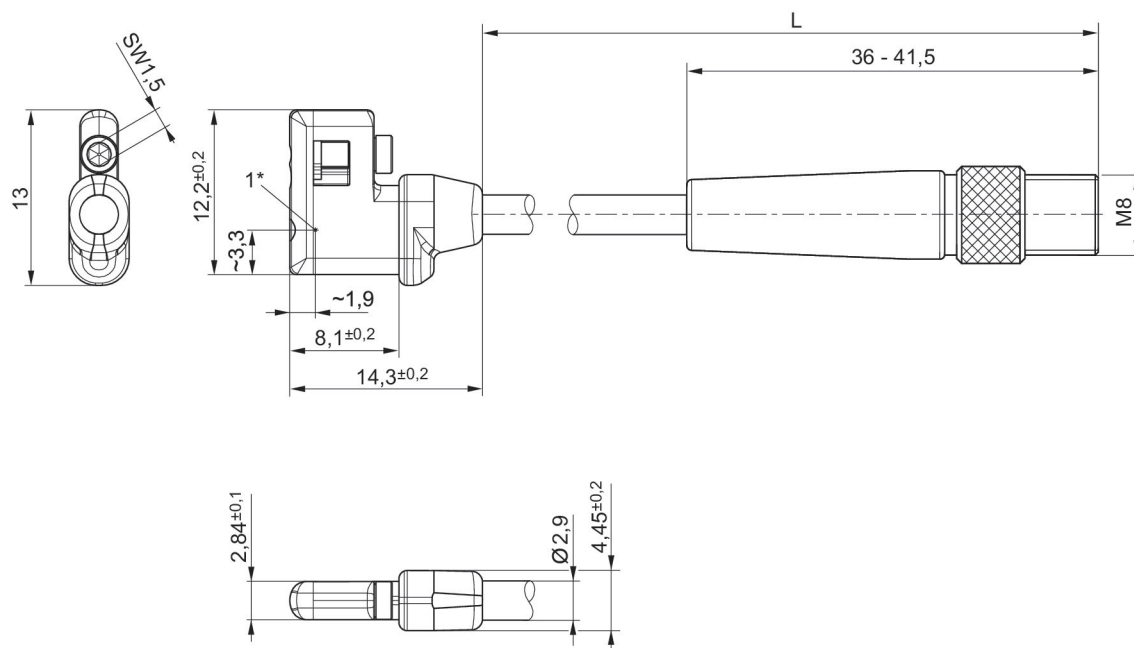
* Schaltpunkt
L = Kabellänge

Sensor, Serie SC4

UPG
RTC
MSN
GPC
MSC
PRA
SSI
TWC
Stecker
CE-Konformitätserklärung
cULus
UL (Underwriters Laboratories)
3-polig



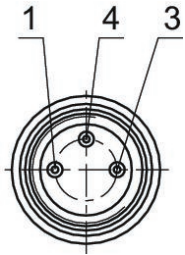
| Direktmontage für Serie | Nutbreite | Kontaktart | Elektrischer Anschluss Größe | Elektrischer Anschluss Anzahl Pole | Materialnummer |
|--|------------|------------------|------------------------------|------------------------------------|----------------|
| UPG, RTC, MSN, GPC, MSC, PRA, SSI, TWC | 4 mm C-Nut | elektronisch PNP | M8 | 3-polig | R412026164 |
| UPG, RTC, MSN, GPC, MSC, PRA, SSI, TWC | 4 mm C-Nut | elektronisch PNP | M8 | 3-polig | R412026165 |
| UPG, RTC, MSN, GPC, MSC, PRA, SSI, TWC | 4 mm C-Nut | elektronisch NPN | M8 | 3-polig | R412026167 |



* Schaltpunkt
L = Kabellänge

R412026164, R412026165, R412026167

Pin-Belegung M8x1 (3-polig)



Efficient pneumatic solutions, our program: cylinders and drives, valves and valve systems, air supply management



Visit us: [Emerson.com/Aventics](https://www.emerson.com/aventics)

Your local contact: [Emerson.com/contactus](https://www.emerson.com/contactus)



[Emerson.com](https://www.emerson.com)



[Facebook.com/EmersonAutomationSolutions](https://www.facebook.com/EmersonAutomationSolutions)



[LinkedIn.com/company/Emerson-Automation-Solutions](https://www.linkedin.com/company/Emerson-Automation-Solutions)



[Twitter.com/EMR_Automation](https://twitter.com/EMR_Automation)

An example configuration is depicted on the title page. The delivered product may thus vary from that in the illustration. Subject to change. This Document, as well as the data, specifications and other information set forth in it, are the exclusive property of AVENTICS GmbH. It may not be reproduced or given to third parties without its consent. Only use the AVENTICS products shown in industrial applications. Read the product documentation completely and carefully before using the product. Observe the applicable regulations and laws of the respective country. When integrating the product into applications, note the system manufacturer's specifications for safe use of the product. The data specified only serve to describe the product. No statements concerning a certain condition or suitability for a certain application can be derived from our information. The information given does not release the user from the obligation of own judgment and verification. It must be remembered that the products are subject to a natural process of wear and aging.

The Emerson logo is a trademark and service mark of Emerson Electric Co. Brand logotype are registered trademarks of one of the Emerson family of companies. All other marks are the property of their respective owners. © 2019 Emerson Electric Co. All rights reserved.



CONSIDER IT SOLVED™