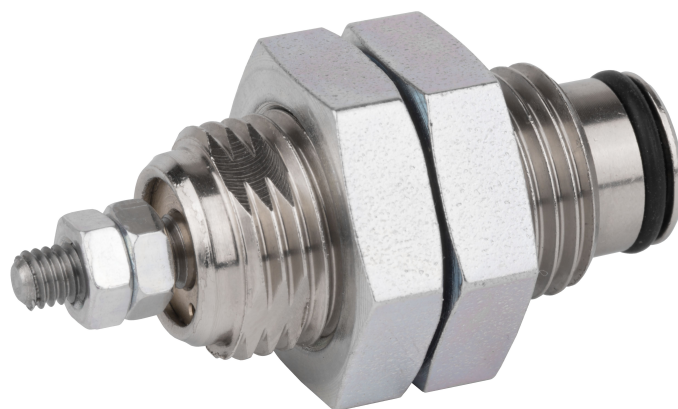


Serie SWN



AVENTICS™

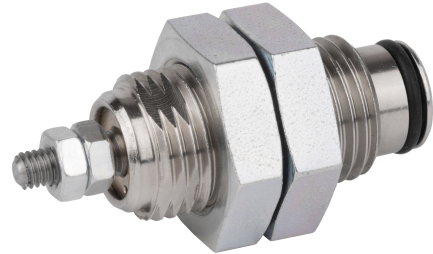
**AVENTICS Serie SWN
Einschraubzylinder**


EMERSON™

Serie SWN

Die AVENTICS Serie SWN ist ein Patronenzylinder und kann somit auf engstem Raum eingesetzt werden.

- Elektrische Ansteuerung
- Ø 6 ... 16 mm
- Einschraubzylinder zum Spannen und Positionieren von kleinen Bauteilen



Produktübersicht

Seite

Einschraubzylinder

Einschraubzylinder, Serie SWN.....	4
Federkraft [N] 2,1 ... 17,5	

Einschraubzylinder, Serie SWN

Hinweis: Federkraft [N] 2,1 ... 17,5

: Mini- und Rundzylinder

: Industriestandard

Kolbenstange: einseitig

Magnetkolben: Kolben ohne Magnet

Dämpfung: elastische Dämpfung

Kolbenstangengewinde - Typ: Außengewinde

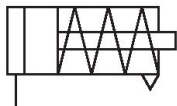
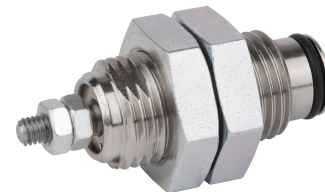
Wirkprinzip: einfachwirkend

Umgebungstemperatur min.: -20 °C

Umgebungstemperatur max.: 80 °C

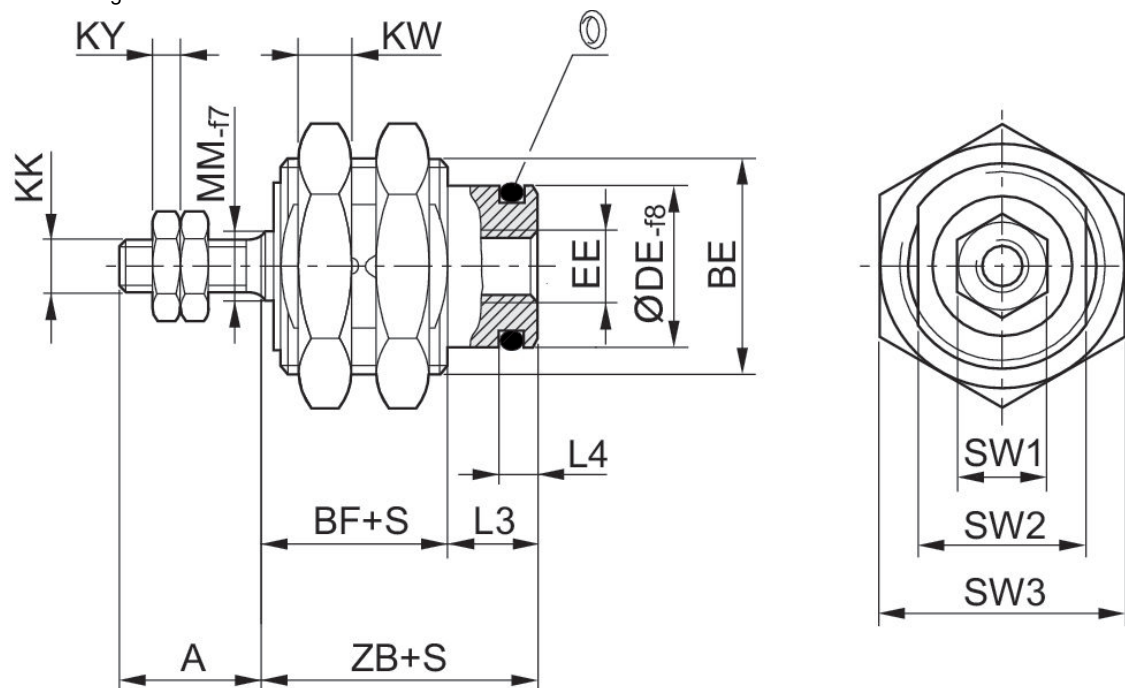
Betriebsdruck min.: 2 bar

Betriebsdruck max.: 8 bar



Kolben-Ø [mm]	Hub [mm]	Kolbenkraft ausfahrend [N]	Materialnummer
6	5	15	0822406900
6	10	15	0822406901
6	15	15	0822406902
10	5	38	0822406910
10	10	38	0822406911
10	15	38	0822406912
16	5	100	0822406920
16	10	100	0822406921
16	15	100	0822406922

Abmessungen



S = Hub

Materialnummer	Kolben-Ø	S	A	BE	BF	DE 1)	Federkraft [N] min.	Federkraft [N] max.	EE
0822406900	6	5	7	M10x1	8.5	7.6	2.4	4.4	M5
0822406901	6	10	7	M10x1	10.5	7.6	2.1	5.8	M5
0822406902	6	15	7	M10x1	12.5	7.6	2.3	5	M5
0822406910	10	5	10	M16x1,5	9.5	12	5.8	9.2	M5
0822406911	10	10	10	M16x1,5	11	12	4.1	7.7	M5
0822406912	10	15	10	M16x1,5	13	12	3.9	8.3	M5
0822406920	16	5	12	M22x1,5	12.8	18.5	14	17	M5
0822406921	16	10	12	M22x1,5	13.8	18.5	11.5	16.5	M5
0822406922	16	15	12	M22x1,5	15.3	18.5	8.5	17.5	M5

Materialnummer	Kolben-Ø	KK	KW	KY	L3	L4	MM	SW1	SW2
0822406900	6	M3	3	2.3	6	2.5	3	5.5	9
0822406901	6	M3	3	2.3	6	2.5	3	5.5	9
0822406902	6	M3	3	2.3	6	2.5	3	5.5	9
0822406910	10	M4	6	3	7	3	5	7	14
0822406911	10	M4	6	3	7	3	5	7	14
0822406912	10	M4	6	3	7	3	5	7	14
0822406920	16	M5	5	3.8	6.7	3.2	5	8	20
0822406921	16	M5	5	3.8	6.7	3.2	5	8	20
0822406922	16	M5	5	3.8	6.7	3.2	5	8	20





Materialnummer	Kolben-Ø	SW3	ZB
0822406900	6	14	14.5
0822406901	6	14	16.5
0822406902	6	14	18.5
0822406910	10	22	16.5
0822406911	10	22	18
0822406912	10	22	20
0822406920	16	27	19.5
0822406921	16	27	20.5
0822406922	16	27	22

1) Empfohlene Aufnahmebohrung DE_{H7}

Efficient pneumatic solutions, our program:
cylinders and drives, valves and valve systems,
air supply management, proportional pressure
control valves



Visit us: www.Emerson.com/aventics
Your local contact: Emerson.com/contactus

-  Emerson.com
-  Facebook.com/EmersonAutomationSolutions
-  LinkedIn.com/company/Emerson-Automation-Solutions
-  Twitter.com/EMR_Automation



The Emerson logo is a trademark and service mark of Emerson Electric Co. AVENTICS is a registered trademark of one of the Emerson family of companies. All other trademarks are the property of their respective owners. © 2020 Emerson Electric Co. All rights reserved.



CONSIDER IT SOLVED™