

Rolling bellow, series BRB

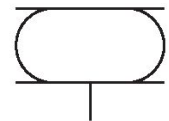
1909041000

AVENTICS
Series BRB
Bellow
actuators

2024-03-15

AVENTICS Series BRB Bellow actuators

The AVENTICS Series BRB cylinders are the cost-optimized variant for lower loads. They are hose rolling lobe air actuators with plastic connecting parts and bellows made of chloroprene elastomer. The Series BRB is distinguished by its lightweight and virtually constant force output over the stroke range.



Technical data

Industry	Industrial
Type	Flexible rolling bellow
Functional principle	Single-acting, retracted without pressure
Compressed air connection	G 1/8
Cover diameter	61 mm
Max. permissible angle of tilt	15 °
Max. effective stroke	37 mm
Min. radial installation space	100 mm
Min. installation height	38 mm
Max. installation height	75 mm
Min. force	1840 N
Max. force	2250 N
Min. working pressure	0 bar
Max. working pressure	8 bar
Min. ambient temperature	-30 °C
Max. ambient temperature	90 °C
Medium	Compressed air
Reduced service life at a temperature greater than	70 °C
Pressure for determining forces	6 bar

Rolling bellow, series BRB

1909041000

AVENTICS
Series BRB
Bellow
actuators

Weight 0.25 kg

2024-03-15

Material

Material bellow	Chloroprene rubber
Material front cover	Polyamide fiber-glass reinforced
Material clamping ring	Steel, chrome-plated
Part No.	1909041000

Technical information

Compliance with the minimum height H min. as well as the maximum height H max. must be ensured with end stops.

Use at operating height $\geq H_{max}$: only permitted upon approval by AVENTICS

Further information on vibration isolation can be found in the “Technical information” document (available in the MediaCentre).

Rolling bellows cylinders may only be moved or pushed together under pressure, otherwise this can damage the bellows.

The pressure dew point must be at least 15 °C less than ambient and medium temperature and may not exceed 3 °C.

The oil content of compressed air must remain constant during the life cycle.

Use only the approved oils from AVENTICS. Further information can be found in the “Technical information” document (available in <https://www.emerson.com/en-us/support>).

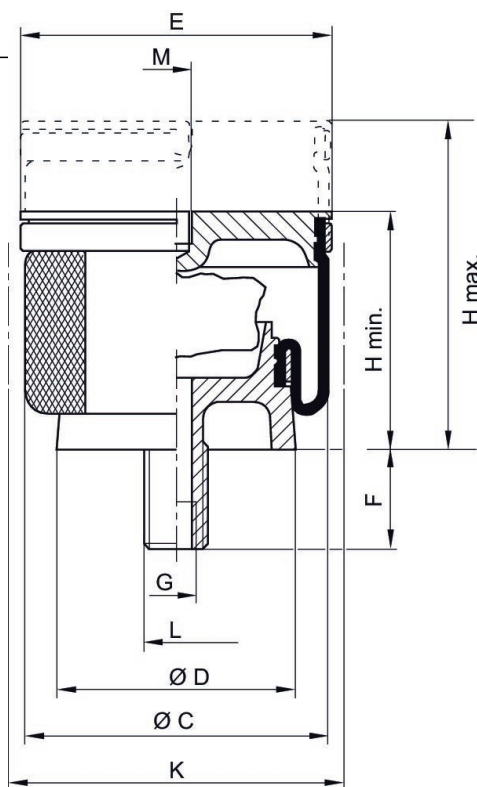
Dimensions

Rolling bellow, series BRB

1909041000

AVENTICS
Series BRB
Bellow
actuators

2024-03-15



Part No.	Compressed air connection G	H min. mm	H max. mm	C mm	D mm	L	Ø E mm	M	F mm
1909041000	G 1/8	38	75	88	61	M16	76	M8	25
2999300100	G 1/8	38	100	88	61	M16	76	M8	25

Part No.	K mm	Min. return force mm
1909041000	100	150
2999300100	100	150