

Foot mounting MS1, Series CM1

1827002286

Foot
mountings

2023-11-01

AVENTICS Foot mountings



Technical data

Industry

Industrial

Version

to mount on cylinder PRA, TRB, CCI, KPZ, 167,
CVI, ITS

For series

KPZ

Piston diameter

32 mm

Material

Housing material

Steel, chrome-plated

Surface housing

galvanized

Screws material

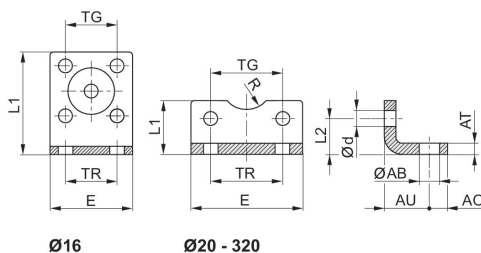
Steel, chrome-plated

Surface screws

galvanized

Part No.

1827002286



Foot mounting MS1, Series CM1

1827002286

Foot
mountings

2023-11-01

| Piston Ø | Part No. | ØAB | AO | AT | AU ±0,2 | Ød | E | L1 | L2 |
|----------|------------|------|----|---------|---------|------|-----|------|------|
| 16 | 1821332053 | 5.5 | 5 | 3 | 13 | 4.5 | 29 | 35.5 | 13 |
| 20 | 1827002284 | 6.6 | 6 | 4 | 16 | 5.4 | 36 | 22 | 16 |
| 25 | 1827002285 | 6.6 | 6 | 4 | 16 | 5.4 | 40 | 23 | 17 |
| 25 | 3682202000 | 7 | 8 | 4 | 22 | 5.5 | 40 | 21 | 11.5 |
| 32 | 1827002286 | 6.6 | 8 | 5 | 18 | 6.6 | 50 | 24 | 16 |
| 32 | 1827001271 | 7 | 8 | 4 ±0,3 | 24 | 6.6 | 48 | 25 | 15.5 |
| 32 | 3662203000 | 7 | 8 | 5 | 24 | 5.5 | 47 | 26 | 16 |
| 40 | 1827002287 | 9 | 8 | 5 | 20 | 6.6 | 60 | 29.5 | 21.5 |
| 40 | 1827001272 | 10 | 10 | 4 ±0,3 | 28 | 6.6 | 56 | 26 | 17 |
| 40 | 3662204000 | 9 | 11 | 5 | 31 | 6.6 | 56 | 28 | 16 |
| 50 | 1827002288 | 9 | 8 | 6 | 24 | 9 | 68 | 30 | 22 |
| 50 | 1827001273 | 10 | 11 | 5 ±0,3 | 32 | 9 | 68 | 32 | 21.5 |
| 50 | 3662205000 | 9 | 12 | 6 | 33 | 6.6 | 63 | 35 | 22 |
| 63 | 1827002289 | 11 | 12 | 6 | 27 | 9 | 84 | 39 | 28.5 |
| 63 | 1827001498 | 10 | 13 | 5 ±0,3 | 32 | 9 | 78 | 34 | 21.5 |
| 63 | 3662206000 | 9 | 12 | 6 | 36 | 9 | 81 | 40 | 20.5 |
| 80 | 1827002290 | 11 | 12 | 8 | 30 | 11 | 102 | 36.5 | 24.5 |
| 80 | 1827001275 | 12 | 16 | 6 ±0,5 | 41 | 11 | 98 | 47 | 27 |
| 80 | 3662208000 | 12 | 15 | 8 | 43 | 9 | 95 | 45 | 26.5 |
| 100 | 1827002291 | 13.5 | 12 | 8 | 33 | 11 | 123 | 38.5 | 26.5 |
| 100 | 1827001276 | 14.5 | 19 | 6 ±0,5 | 41 | 11 | 117 | 52 | 26.5 |
| 100 | 3662210000 | 14 | 17 | 10 | 43 | 11 | 115 | 50 | 26 |
| 125 | 1827001310 | 16.5 | 20 | 8 ±1,0 | 45 | 13.5 | 144 | 69 | 35 |
| 160 | 1827001457 | 18.5 | 23 | 10 ±1,0 | 60 | 17.5 | 185 | 100 | 45 |
| 200 | 1827001458 | 24 | 26 | 12 ±1,0 | 70 | 17.5 | 220 | 120 | 47.5 |
| 250 | 1827001459 | 28 | 33 | 20 ±1,0 | 75 | 22 | 280 | 135 | 55 |
| 320 | 5239010502 | 35 | 45 | 23 ±1,0 | 85 | 26 | 350 | 200 | 65 |

| Piston Ø | R | TG | TR |
|----------|------|-----------|----|
| 16 | 8 | 18 ±0,2 | 18 |
| 20 | 10 | 22 ±0,2 | 22 |
| 25 | 11 | 26 ±0,2 | 26 |
| 25 | 13.5 | 27 | 26 |
| 32 | – | 32 | 32 |
| 32 | 15 | 32,5 ±0,2 | 32 |
| 32 | 15 | 32 | 32 |
| 40 | – | 42 | 42 |
| 40 | 17.5 | 38 ±0,2 | 36 |
| 40 | 20 | 40 | 36 |
| 50 | – | 50 | 50 |
| 50 | 20 | 46,5 ±0,2 | 45 |
| 50 | 23 | 46 | 45 |
| 63 | – | 62 | 62 |
| 63 | 22.5 | 56,5 ±0,2 | 50 |

Foot mounting MS1, Series CM1

1827002286

Foot
mountings

2023-11-01

| Piston Ø | R | TG | TR |
|----------|------|----------|-----|
| 63 | 23 | 59 | 50 |
| 80 | – | 82 | 82 |
| 80 | 22.5 | 72 ±0,2 | 63 |
| 80 | 26 | 73 | 63 |
| 100 | – | 103 | 103 |
| 100 | 27.5 | 89 ±0,2 | 75 |
| 100 | 32 | 90 | 75 |
| 125 | 30 | 110 ±0,3 | 90 |
| 160 | 32.5 | 140 ±0,3 | 115 |
| 200 | 37.5 | 175 ±0,3 | 135 |
| 250 | 45 | 220 ±0,3 | 165 |
| 320 | 55 | 270 ±0,3 | 200 |