

Foot mounting MS1, Series CM1

1827001498

Foot
mountings

2023-11-01

AVENTICS Foot mountings



Technical data

Industry

Industrial

Version

to mount on cylinder PRA, TRB, CCI, KPZ, 167,
CVI, ITS

For series

PRA/TRB
CCI
CVI

Standardization

ISO 15552

Piston diameter

63 mm

Material

Housing material

Steel, chrome-plated

Surface housing

galvanized

Screws material

Steel, chrome-plated

Surface screws

galvanized

Part No.

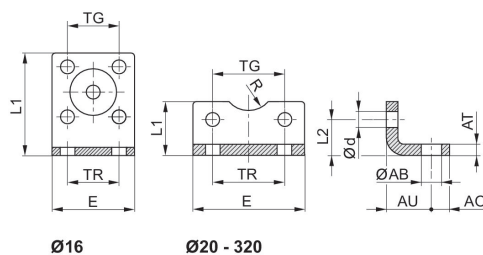
1827001498

Foot mounting MS1, Series CM1

1827001498

Foot
mountings

2023-11-01



| Piston Ø | Part No. | ØAB | AO | AT | AU ±0,2 | Ød | E | L1 | L2 |
|----------|------------|------|----|---------|---------|------|-----|------|------|
| 16 | 1821332053 | 5.5 | 5 | 3 | 13 | 4.5 | 29 | 35.5 | 13 |
| 20 | 1827002284 | 6.6 | 6 | 4 | 16 | 5.4 | 36 | 22 | 16 |
| 25 | 1827002285 | 6.6 | 6 | 4 | 16 | 5.4 | 40 | 23 | 17 |
| 25 | 3682202000 | 7 | 8 | 4 | 22 | 5.5 | 40 | 21 | 11.5 |
| 32 | 1827002286 | 6.6 | 8 | 5 | 18 | 6.6 | 50 | 24 | 16 |
| 32 | 1827001271 | 7 | 8 | 4 ±0,3 | 24 | 6.6 | 48 | 25 | 15.5 |
| 32 | 3662203000 | 7 | 8 | 5 | 24 | 5.5 | 47 | 26 | 16 |
| 40 | 1827002287 | 9 | 8 | 5 | 20 | 6.6 | 60 | 29.5 | 21.5 |
| 40 | 1827001272 | 10 | 10 | 4 ±0,3 | 28 | 6.6 | 56 | 26 | 17 |
| 40 | 3662204000 | 9 | 11 | 5 | 31 | 6.6 | 56 | 28 | 16 |
| 50 | 1827002288 | 9 | 8 | 6 | 24 | 9 | 68 | 30 | 22 |
| 50 | 1827001273 | 10 | 11 | 5 ±0,3 | 32 | 9 | 68 | 32 | 21.5 |
| 50 | 3662205000 | 9 | 12 | 6 | 33 | 6.6 | 63 | 35 | 22 |
| 63 | 1827002289 | 11 | 12 | 6 | 27 | 9 | 84 | 39 | 28.5 |
| 63 | 1827001498 | 10 | 13 | 5 ±0,3 | 32 | 9 | 78 | 34 | 21.5 |
| 63 | 3662206000 | 9 | 12 | 6 | 36 | 9 | 81 | 40 | 20.5 |
| 80 | 1827002290 | 11 | 12 | 8 | 30 | 11 | 102 | 36.5 | 24.5 |
| 80 | 1827001275 | 12 | 16 | 6 ±0,5 | 41 | 11 | 98 | 47 | 27 |
| 80 | 3662208000 | 12 | 15 | 8 | 43 | 9 | 95 | 45 | 26.5 |
| 100 | 1827002291 | 13.5 | 12 | 8 | 33 | 11 | 123 | 38.5 | 26.5 |
| 100 | 1827001276 | 14.5 | 19 | 6 ±0,5 | 41 | 11 | 117 | 52 | 26.5 |
| 100 | 3662210000 | 14 | 17 | 10 | 43 | 11 | 115 | 50 | 26 |
| 125 | 1827001310 | 16.5 | 20 | 8 ±1,0 | 45 | 13.5 | 144 | 69 | 35 |
| 160 | 1827001457 | 18.5 | 23 | 10 ±1,0 | 60 | 17.5 | 185 | 100 | 45 |
| 200 | 1827001458 | 24 | 26 | 12 ±1,0 | 70 | 17.5 | 220 | 120 | 47.5 |
| 250 | 1827001459 | 28 | 33 | 20 ±1,0 | 75 | 22 | 280 | 135 | 55 |
| 320 | 5239010502 | 35 | 45 | 23 ±1,0 | 85 | 26 | 350 | 200 | 65 |

| Piston Ø | R | TG | TR |
|----------|------|-----------|----|
| 16 | 8 | 18 ±0,2 | 18 |
| 20 | 10 | 22 ±0,2 | 22 |
| 25 | 11 | 26 ±0,2 | 26 |
| 25 | 13.5 | 27 | 26 |
| 32 | – | 32 | 32 |
| 32 | 15 | 32,5 ±0,2 | 32 |
| 32 | 15 | 32 | 32 |

Foot mounting MS1, Series CM1

1827001498

Foot
mountings

2023-11-01

| Piston Ø | R | TG | TR |
|----------|------|-----------|-----|
| 40 | – | 42 | 42 |
| 40 | 17.5 | 38 ±0,2 | 36 |
| 40 | 20 | 40 | 36 |
| 50 | – | 50 | 50 |
| 50 | 20 | 46,5 ±0,2 | 45 |
| 50 | 23 | 46 | 45 |
| 63 | – | 62 | 62 |
| 63 | 22.5 | 56,5 ±0,2 | 50 |
| 63 | 23 | 59 | 50 |
| 80 | – | 82 | 82 |
| 80 | 22.5 | 72 ±0,2 | 63 |
| 80 | 26 | 73 | 63 |
| 100 | – | 103 | 103 |
| 100 | 27.5 | 89 ±0,2 | 75 |
| 100 | 32 | 90 | 75 |
| 125 | 30 | 110 ±0,3 | 90 |
| 160 | 32.5 | 140 ±0,3 | 115 |
| 200 | 37.5 | 175 ±0,3 | 135 |
| 250 | 45 | 220 ±0,3 | 165 |
| 320 | 55 | 270 ±0,3 | 200 |