

Charnela trasera MP2-HD, Serie CM1

1827001290

Charnela
trasera

2024-03-26

Fijación de horquilla AVENTICS



Datos técnicos

Sector

Industria

Versión

Apto para aplicaciones de construcción de máquinas robustas

Normalización

ISO 15552

Diámetro de émbolo

40 mm

Material

Material

Aluminio

Superficie

forjado

Material de los tornillos

Acero, cromado

Superficie tornillos

galvanizado

N° de material

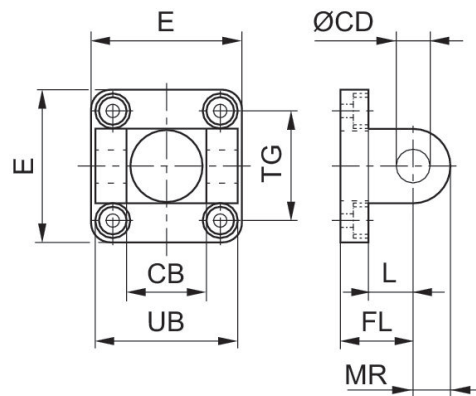
1827001290

Charnela trasera MP2-HD, Serie CM1

1827001290

Charnela
trasera

2024-03-26



| Ø del émbolo | Nº de material | CB H14 | Ø CD H9 | E | FL ±0.2 | L mín. | MR máx. | UB h13 | TG |
|--------------|----------------|--------|---------|-------|---------|--------|---------|--------|-----------|
| 32 | 1827001289 | 26 | 10 | 47.5 | 22 | 12 | 10 | 45 | 32.5 ±0.2 |
| 40 | 1827001290 | 28 | 12 | 53.5 | 25 | 15 | 13 | 52 | 38 ±0.2 |
| 50 | 1827001291 | 32 | 12 | 64 | 27 | 15 | 13 | 60 | 46.5 ±0.2 |
| 63 | 1827001500 | 40 | 16 | 74 | 32 | 18 | 17 | 70 | 56.5 ±0.2 |
| 80 | 1827001293 | 50 | 16 | 94 | 36 | 20 | 17 | 90 | 72.0 ±0.2 |
| 100 | 1827001294 | 60 | 20 | 113.5 | 41 | 25 | 18 | 110 | 89.0 ±0.2 |
| 125 | 1827004862 | 70 | 25 | 138 | 50 | 30 | 26 | 130 | 110 ±0.3 |
| 160 | 1827004863 | 90 | 30 | 180 | 55 | 35 | 31 | 170 | 140 ±0.3 |
| 200 | 1827004864 | 90 | 30 | 220 | 60 | 35 | 31 | 170 | 175 ±0.3 |
| 250 | 1827004865 | 110 | 40 | 280 | 70 | 45 | 41 | 200 | 220 ±0.3 |
| 320 | 5239813402 | 120 | 45 | 350 | 80 | 50 | 45 | 220 | 270 ±0.3 |