

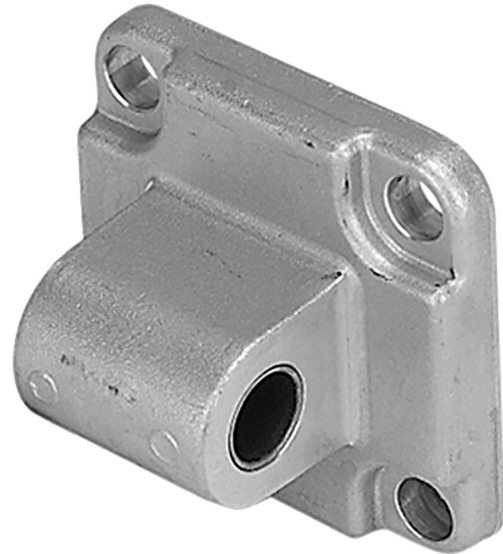
Tenon arrière MP4-HD, Série CM1

1827001287

Tenon
arrière

2024-09-03

Tenons arrière AVENTICS



Données techniques

Secteur

Industrie

Version

Convient aux utilisations de construction
mécanique robustes
pour fixations par chape arrière MP2 et AB3

Normalisation

ISO 15552

Diamètre de piston

80 mm

Matériau

Matériau

Aluminium (forgé)

Matériau vis

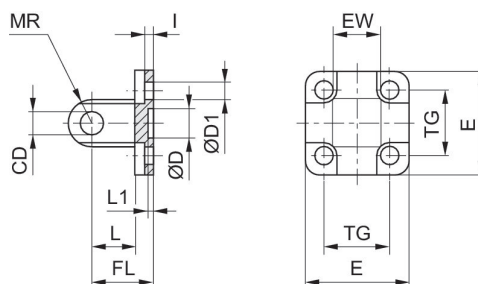
Acier, chromé

Surface vis

galvanisé

Référence

1827001287



Tenon arrière MP4-HD, Série CM1

1827001287

Tenon
arrière

2024-09-03

| Ø du piston | Référence | CD H9 | Ø D | Ø D1 | E | EW | FL ±0,2 | l ±0,5 | L min. |
|-------------|------------|-------|---------|------|-------|-------------------|---------|--------|--------|
| 16 | 1825805368 | 6 | 10 H13 | 4.5 | 27 | 12 -0.2/-0.6 | 16 | 2.6 | 10 |
| 20 | 1827002300 | 8 | 12 H13 | 5.5 | 34 | 16 -0.2/-0.6 | 20 | 2.6 | 14 |
| 25 | 1827002301 | 8 | 12 H13 | 5.5 | 40 | 16 -0.2/-0.6 | 20 | 2.6 | 14 |
| 32 | 1827001283 | 10 | 30 H11 | 6.6 | 47.5 | 26 -0.2/-0.6 | 22 | 5.5 | 12 |
| 40 | 1827001284 | 12 | 35 H11 | 6.6 | 53.5 | 28 -0.2/-0.6 | 25 | 5.5 | 15 |
| 50 | 1827001285 | 12 | 40 H11 | 9 | 64 | 32 -0.2/-0.6 | 27 | 6.5 | 15 |
| 63 | 1827020086 | 16 | 45 H11 | 9 | 74 | 40 -0.2/-0.6 | 32 | 6.5 | 20 |
| 80 | 1827001287 | 16 | 45 H11 | 11 | 94 | 50 -0.2/-0.6 | 36 | 10 | 20 |
| 100 | 1827001288 | 20 | 55 H11 | 11 | 113.5 | 60 -0.2/-0.6 | 41 | 10 | 25 |
| 125 | 1827004866 | 25 | 60 H11 | 14 | 138 | 70 -0.5/-1.2 | 50 | 10 | 30 |
| 160 | 1827004867 | 30 | 65 H11 | 18 | 180 | 90 -0.5/-1.2 | 55 | 10 | 35 |
| 200 | 1827004868 | 30 | 75 H11 | 18 | 220 | 90 -0.5/-1.2 | 60 | 11 | 35 |
| 250 | 1827004869 | 40 | 90 H11 | 22 | 280 | 110 - 0.5/-1.2 | 70 | 11 | 45 |
| 320 | 5239813412 | 45 | 110 H11 | 26 | 350 | 120 - 0.5/-1.2 | 80 | 15 | 50 |

| Ø du piston | L1 min. | MR Maxi | TG |
|-------------|---------|---------|-----------|
| 16 | 3 | 6 | 18 ±0.2 |
| 20 | 3 | 8 | 22 ±0.4 |
| 25 | 3 | 8 | 26 ±0.4 |
| 32 | 4.5 | 10 | 32.5 ±0.2 |
| 40 | 4.5 | 12 | 38 ±0.2 |
| 50 | 4.5 | 12 | 46.5 ±0.2 |
| 63 | 4.5 | 16 | 56.5 ±0.2 |
| 80 | 4.5 | 16 | 72 ±0.2 |
| 100 | 4.5 | 20 | 89 ±0.2 |
| 125 | 7 | 26 | 110 ±0.3 |
| 160 | 7 | 31 | 140 ±0.3 |
| 200 | 7 | 31 | 175 ±0.3 |
| 250 | 11 | 41 | 220 ±0.3 |
| 320 | 11 | 45 | 270 ±0.3 |