

Tenón trasero AVENTICS



Datos técnicos

Sector

Industria

Versión

Apto para aplicaciones de construcción de máquinas robustas para charnela trasera MP2 y AB3

Normalización

ISO 15552

Diámetro de émbolo

32 mm

Cojinete de articulación-Ø

10 mm

Material

Material carcasa

Aluminio

Superficie Carcasa

forjado

Material de los tornillos

Acero, cromado

Superficie tornillos

galvanizado

N° de material

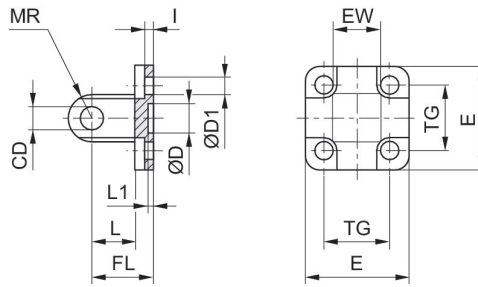
1827001283

Soporte MP4-HD, Serie CM1

1827001283

Soporte

2023-10-25



| Ø del émbolo | N° de material | CD H9 | Ø D | Ø D1 | E | EW | FL ±0,2 | l ±0,5 | L mín. |
|--------------|----------------|-------|---------|------|-------|---------------|---------|--------|--------|
| 16 | 1825805368 | 6 | 10 H13 | 4.5 | 27 | 12 -0.2/-0.6 | 16 | 2.6 | 10 |
| 20 | 1827002300 | 8 | 12 H13 | 5.5 | 34 | 16 -0.2/-0.6 | 20 | 2.6 | 14 |
| 25 | 1827002301 | 8 | 12 H13 | 5.5 | 40 | 16 -0.2/-0.6 | 20 | 2.6 | 14 |
| 32 | 1827001283 | 10 | 30 H11 | 6.6 | 47.5 | 26 -0.2/-0.6 | 22 | 5.5 | 12 |
| 40 | 1827001284 | 12 | 35 H11 | 6.6 | 53.5 | 28 -0.2/-0.6 | 25 | 5.5 | 15 |
| 50 | 1827001285 | 12 | 40 H11 | 9 | 64 | 32 -0.2/-0.6 | 27 | 6.5 | 15 |
| 63 | 1827020086 | 16 | 45 H11 | 9 | 74 | 40 -0.2/-0.6 | 32 | 6.5 | 20 |
| 80 | 1827001287 | 16 | 45 H11 | 11 | 94 | 50 -0.2/-0.6 | 36 | 10 | 20 |
| 100 | 1827001288 | 20 | 55 H11 | 11 | 113.5 | 60 -0.2/-0.6 | 41 | 10 | 25 |
| 125 | 1827004866 | 25 | 60 H11 | 14 | 138 | 70 -0.5/-1.2 | 50 | 10 | 30 |
| 160 | 1827004867 | 30 | 65 H11 | 18 | 180 | 90 -0.5/-1.2 | 55 | 10 | 35 |
| 200 | 1827004868 | 30 | 75 H11 | 18 | 220 | 90 -0.5/-1.2 | 60 | 11 | 35 |
| 250 | 1827004869 | 40 | 90 H11 | 22 | 280 | 110 -0.5/-1.2 | 70 | 11 | 45 |
| 320 | 5239813412 | 45 | 110 H11 | 26 | 350 | 120 -0.5/-1.2 | 80 | 15 | 50 |

| Ø del émbolo | L1 mín. | MR máx. | TG |
|--------------|---------|---------|-----------|
| 16 | 3 | 6 | 18 ±0.2 |
| 20 | 3 | 8 | 22 ±0.4 |
| 25 | 3 | 8 | 26 ±0.4 |
| 32 | 4.5 | 10 | 32.5 ±0.2 |
| 40 | 4.5 | 12 | 38 ±0.2 |
| 50 | 4.5 | 12 | 46.5 ±0.2 |
| 63 | 4.5 | 16 | 56.5 ±0.2 |
| 80 | 4.5 | 16 | 72 ±0.2 |
| 100 | 4.5 | 20 | 89 ±0.2 |
| 125 | 7 | 26 | 110 ±0.3 |
| 160 | 7 | 31 | 140 ±0.3 |
| 200 | 7 | 31 | 175 ±0.3 |
| 250 | 11 | 41 | 220 ±0.3 |
| 320 | 11 | 45 | 270 ±0.3 |