

Foot mounting MS1, Series CM1

1827001272

Foot
mountings

2023-11-01

AVENTICS Foot mountings



Technical data

Industry

Industrial

Version

to mount on cylinder PRA, TRB, CCI, KPZ, 167,
CVI, ITS

For series

PRA/TRB
CCI
CVI

Standardization

ISO 15552

Piston diameter

40 mm

Material

Housing material

Steel, chrome-plated

Surface housing

galvanized

Screws material

Steel, chrome-plated

Surface screws

galvanized

Part No.

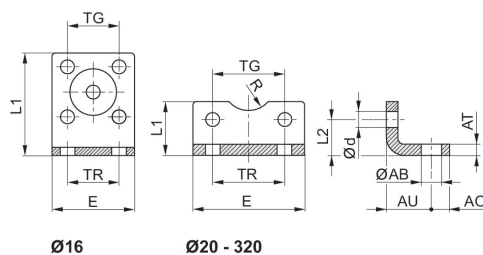
1827001272

Foot mounting MS1, Series CM1

1827001272

Foot
mountings

2023-11-01



Piston Ø	Part No.	ØAB	AO	AT	AU ±0,2	Ød	E	L1	L2
16	1821332053	5.5	5	3	13	4.5	29	35.5	13
20	1827002284	6.6	6	4	16	5.4	36	22	16
25	1827002285	6.6	6	4	16	5.4	40	23	17
25	3682202000	7	8	4	22	5.5	40	21	11.5
32	1827002286	6.6	8	5	18	6.6	50	24	16
32	1827001271	7	8	4 ±0,3	24	6.6	48	25	15.5
32	3662203000	7	8	5	24	5.5	47	26	16
40	1827002287	9	8	5	20	6.6	60	29.5	21.5
40	1827001272	10	10	4 ±0,3	28	6.6	56	26	17
40	3662204000	9	11	5	31	6.6	56	28	16
50	1827002288	9	8	6	24	9	68	30	22
50	1827001273	10	11	5 ±0,3	32	9	68	32	21.5
50	3662205000	9	12	6	33	6.6	63	35	22
63	1827002289	11	12	6	27	9	84	39	28.5
63	1827001498	10	13	5 ±0,3	32	9	78	34	21.5
63	3662206000	9	12	6	36	9	81	40	20.5
80	1827002290	11	12	8	30	11	102	36.5	24.5
80	1827001275	12	16	6 ±0,5	41	11	98	47	27
80	3662208000	12	15	8	43	9	95	45	26.5
100	1827002291	13.5	12	8	33	11	123	38.5	26.5
100	1827001276	14.5	19	6 ±0,5	41	11	117	52	26.5
100	3662210000	14	17	10	43	11	115	50	26
125	1827001310	16.5	20	8 ±1,0	45	13.5	144	69	35
160	1827001457	18.5	23	10 ±1,0	60	17.5	185	100	45
200	1827001458	24	26	12 ±1,0	70	17.5	220	120	47.5
250	1827001459	28	33	20 ±1,0	75	22	280	135	55
320	5239010502	35	45	23 ±1,0	85	26	350	200	65

Piston Ø	R	TG	TR
16	8	18 ±0,2	18
20	10	22 ±0,2	22
25	11	26 ±0,2	26
25	13.5	27	26
32	–	32	32
32	15	32,5 ±0,2	32
32	15	32	32

Foot mounting MS1, Series CM1

1827001272

Foot
mountings

2023-11-01

Piston Ø	R	TG	TR
40	–	42	42
40	17.5	38 ±0,2	36
40	20	40	36
50	–	50	50
50	20	46,5 ±0,2	45
50	23	46	45
63	–	62	62
63	22.5	56,5 ±0,2	50
63	23	59	50
80	–	82	82
80	22.5	72 ±0,2	63
80	26	73	63
100	–	103	103
100	27.5	89 ±0,2	75
100	32	90	75
125	30	110 ±0,3	90
160	32.5	140 ±0,3	115
200	37.5	175 ±0,3	135
250	45	220 ±0,3	165
320	55	270 ±0,3	200