

Coupling plug with internal thread

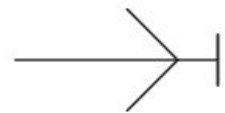
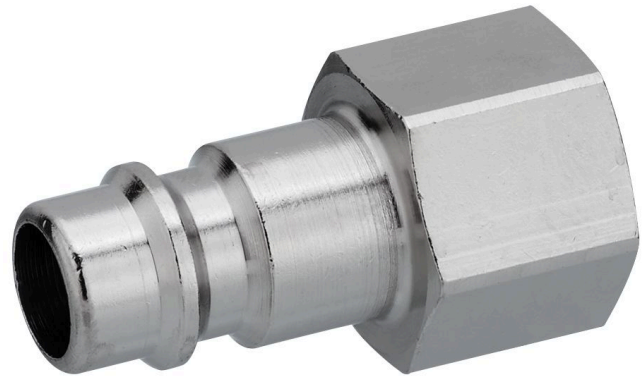
1823373000

Series CP1

2024-06-04

AVENTICS Series CP1 Couplings

The AVENTICS Series CP1 of safe couplings using single snap-on coupling are robust, safe and fit two different plug-in profiles, the EURO- profile and the ARO profile.



Technical data

Industry	Industrial
Silicon	silicone-free
Port D	NW 5
Port G	G 1/8
Compressed air connection type	Coupling plug
Nominal width NW	5 mm
Min. working pressure	0 bar
Max. working pressure	16 bar
Min. ambient temperature	-10 °C
Max. ambient temperature	90 °C
Min. medium temperature	-10 °C
Max. medium temperature	90 °C
Medium	Compressed air
Delivery unit	10 piece
Weight per piece	0.014 kg
Housing material	Brass
Surface housing	nickel-plated
	1823373000

Coupling plug with internal thread

1823373000

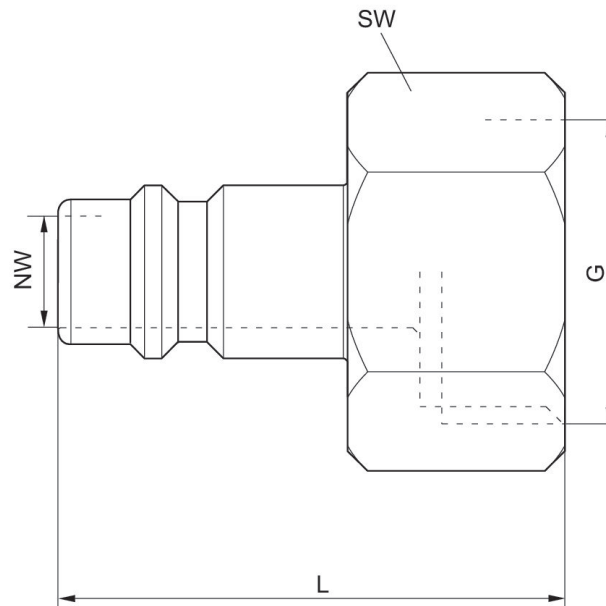
Series CP1

2024-06-04

Technical information

Coupling plugs are applicable for all locking and safety couplings with adequate nominal width

Dimensions



Part No.	Port G	Nominal width NW	L	SW
1823373000	G 1/8	5 mm	25	14