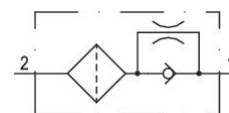


# Flow valve, Series VCK

2024-04-05

0821305044

## Series QR1



## Technical data

Industry	Industrial
Compressed air connection 1	G 1/8
Compressed air connection 2	G 1/8
Min. ambient temperature	0 °C
Max. ambient temperature	60 °C
Medium	Compressed air
Min. suction volume for $P_u = -[[0,3]$ bar]	2.3 l/min
Min. suction volume for $P_u = -[[0,6]$ bar]	2.5 l/min
Max. flow rate during blow-off, Blow-off pressure: $[[5]$ bar]	310 l/min
Weight	0.011 kg

## Material

Housing material	Aluminum
Surface housing	anodized
Part No.	0821305044

## Technical information

Non-return valve with ball seat: closes the suction line if leak air escapes from a suction cup that is not on or not fully on the workpiece. Adjustment of the suction cup is no longer necessary if handling plane workpieces. Installed filter prevents valve contamination.

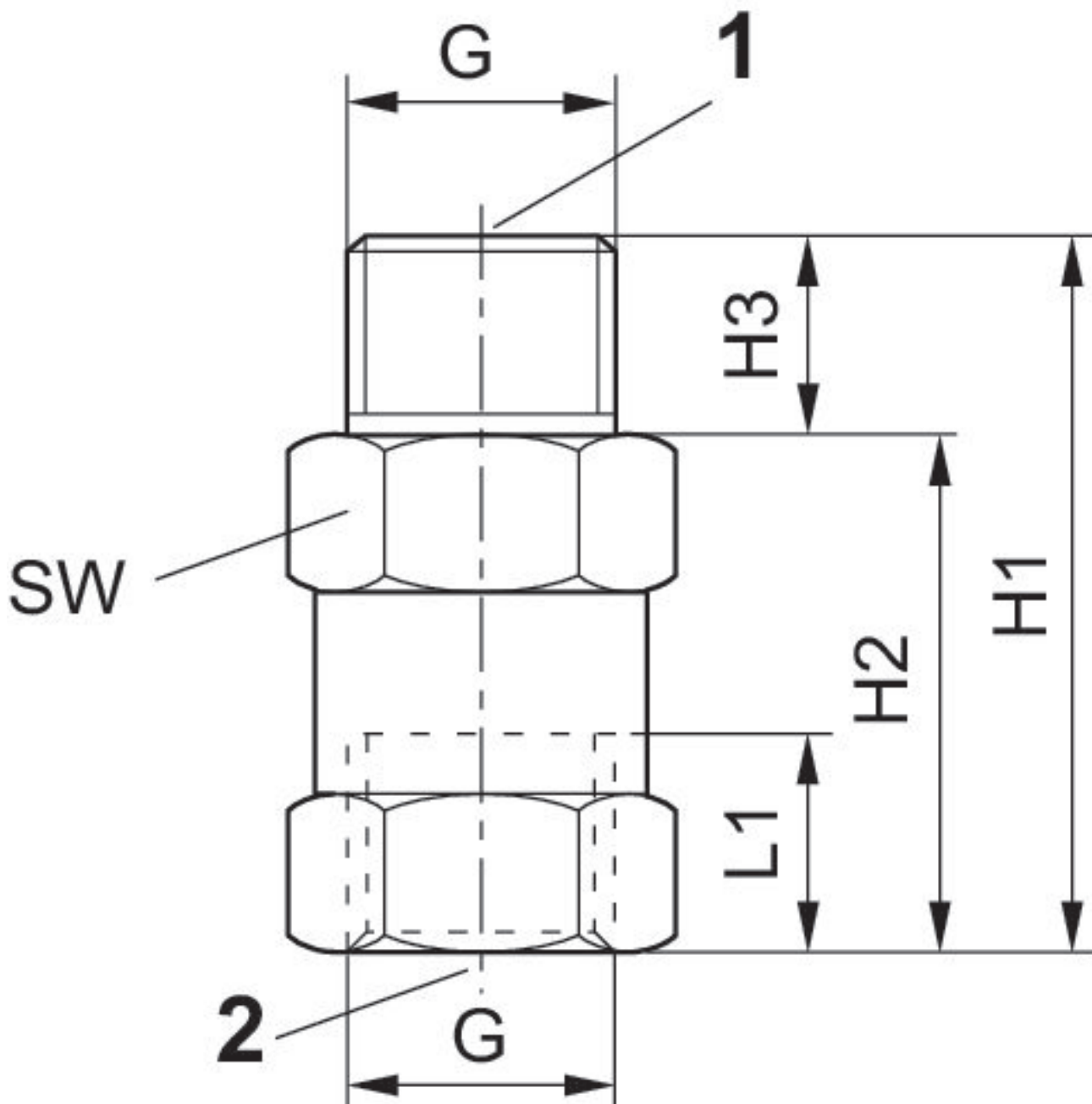
The min. control pressure must be adhered to, since otherwise faulty switching and valve failure may result!

The pressure dew point must be at least 15 °C less than ambient and medium temperature and may not exceed 3 °C.

The oil content of compressed air must remain constant during the life cycle.

Use only the approved oils from AVENTICS. Further information can be found in the "Technical information" document (available in <https://www.emerson.com/en-us/support>).

## Dimensions



vacuum ejector connection 1, suction cup connection 2

Part No.	G	H1	H2	H3	L1	SW
0821305043	M5	20	15.5	4.5	4.5	8
0821305044	G 1/8	34	26	8	8.5	14
0821305045	G 1/4	36	26	10	11	17
0821305046	G 3/8	39	29	10	12	22