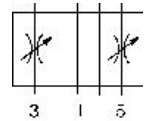


Throttle plate

0821201025

581 ISO 3

2024-08-15



Technical data

Industry	Industrial
Type	Throttle plate
Frame size	ISO 3
Standards	ISO 5599-1
Min. working pressure	0 bar
Max. working pressure	16 bar
Min. ambient temperature	0 °C
Max. ambient temperature	80 °C
Min. medium temperature	0 °C
Max. medium temperature	80 °C
Medium	Compressed air
Weight	1.01 kg
Material	
Material base plate	Aluminum
Seal material	Acrylonitrile butadiene rubber
Part No.	0821201025

Technical information

The min. control pressure must be adhered to, since otherwise faulty switching and valve failure may result!

The pressure dew point must be at least 15 °C less than ambient and medium temperature and may not exceed 3 °C.

The oil content of compressed air must remain constant during the life cycle.

Use only the approved oils from AVENTICS. Further information can be found in the "Technical information" document (available in <https://www.emerson.com/en-us/support>).

Throttle plate

0821201025

581 ISO 3

2024-08-15

Dimensions

