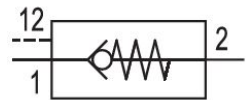


AVENTICS Series NR02 Non-return valves

AVENTICS Series NR02, thanks to an array of connection options, the NR non-return valves can be screwed in separately and are also suitable for direct installation in piping. NR02 non-return valves are pneumatically pilot operated.



Technical data

Industry	Industrial
Type	Poppet valve
Mounting	installing in piping
Compressed air connection 1	G 1/2
Compressed air connection type 1	Internal thread
Compressed air connection 2	G 1/2
Compressed air connection type 2	Internal thread
Compressed air connection 12	G 1/8
Nominal flow Qn 1 to 2	2300 l/min
Nominal flow Qn 2 to 1	2200 l/min
Min. working pressure	1 bar
Max. working pressure	12 bar
Min. ambient temperature	-10 °C
Max. ambient temperature	60 °C
Min. medium temperature	-10 °C
Max. medium temperature	60 °C
Medium	Compressed air
Weight	0.23 kg

Pilot-operated non-return valve, Series NR02

0821003028

Series
NR02

2024-01-24

Material

Housing material

Die cast zinc

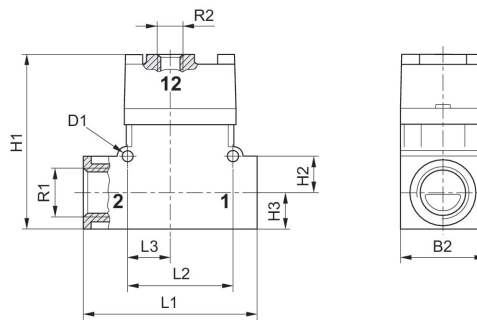
Seal material

Acrylonitrile butadiene rubber

Part No.

0821003028

Dimensions



	R1	R2	Ø D1	L1	L2	L3	H1	H2	H3
0821003027	G 3/8	G 1/8	4.3	72	44	18	72	15	15
0821003028	G 1/2	G 1/8	4.3	72	44	18	72	15	15

	B1
0821003027	35
0821003028	35