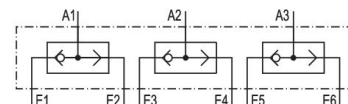


AVENTICS Logic valves



Technical data

Industry	Industrial
Sealing principle	Soft seal
Type	Poppet valve
Medium	Compressed air
Max. particle size	1 µm
Min. ambient temperature	0 °C
Max. ambient temperature	80 °C
Min. medium temperature	0 °C
Max. medium temperature	80 °C
Min. oil content of compressed air	0 mg/m ³
Max. oil content of compressed air	1 mg/m ³
Logic function	Shuttle valves (OR)
Connection type	Plate valve with pipe connection
Nominal flow Qn	80 l/min
Min. working pressure	1 bar
Max. working pressure	10 bar
Weight	0.03 kg
Housing material	Polyamide
Seal material	Acrylonitrile butadiene rubber
Part No.	0821000005

Technical information

The pressure dew point must be at least 15 °C less than ambient and medium temperature and may not exceed 3 °C.

The oil content of compressed air must remain constant during the life cycle.

Use only the approved oils from AVENTICS. Further information can be found in the “Technical information” document (available in <https://www.emerson.com/en-us/support>).

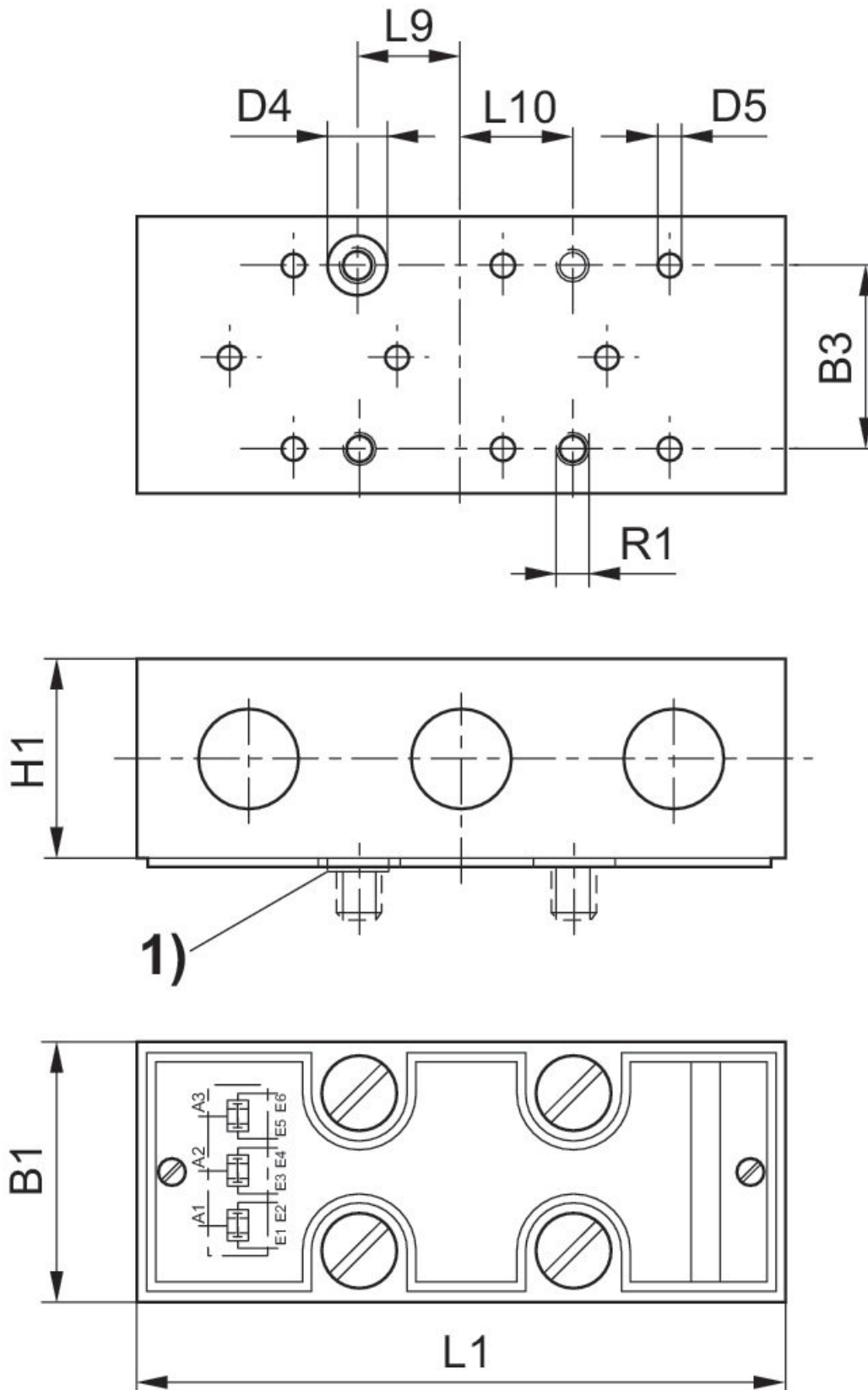
The min. control pressure must be adhered to, since otherwise faulty switching and valve failure may result!

The pressure dew point must be at least 15 °C less than ambient and medium temperature and may not exceed 3 °C.

The oil content of compressed air must remain constant during the life cycle.

Use only the approved oils from AVENTICS. Further information can be found in the “Technical information” document (available in <https://www.emerson.com/en-us/support>).

Dimensions



1) pins for securing the position

Dimensions

Part No.	R1	D4	D5	H1	L1	L9	L10	B1	B3
0821000005	M4	6.2	2.5	19	61.5	9.5	11	25	15
0821000006	M4	6.2	2.5	19	61.5	9.5	11	25	15
0821001005	M4	6.2	2.5	19	61.5	9.5	11	25	15

1) pins for securing the position