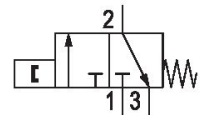


## AVENTICS Series SP1 Pneumatic proximity sensors

AVENTICS Series SP1 proximity pneumatic sensors can be mounted in any orientation. The active switching surface of the pneumatic proximity sensor is marked to assist with the setup and successful operation of the device. A positive switched output is identifiable via a pop-up indicator sited on top of the switch.



### Technical data

Industry	Industrial
Mounting orientation	Any
Min. working pressure	2 bar
Max. working pressure	6 bar
Min. ambient temperature	-15 °C
Max. ambient temperature	60 °C
Medium	Compressed air
Max. particle size	40 µm
Nominal flow Qn	40 l/min
Switching point precision	±0,2 mT
Switching time on	12 ms
Switching time off	25 ms
Weight	0.015 kg
Housing material	Polyamide
Part No.	0820212201

0820212201

2024-02-22

Use only the approved oils from AVENTICS. Further information can be found in the “Technical information” document (available in <https://www.emerson.com/en-us/support>).

Technical drawing of a mechanical part showing three views: front, top, and side. The front view (left) shows a rectangular part with a central hole of diameter Ø5, a width of 18, and a height of 12. The top view (right) shows a rectangular part with a width of 40,3 and a height of 18,2. The side view (bottom) shows a rectangular part with a width of 18,2 and a height of 12. Dimensions are given in millimeters.

1) compressed air connection 2) output line 3) exhaust 4) visual indicator