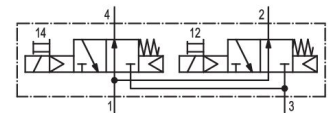


0820037228

AVENTICS Series CD02-AL Standardized valve systems (ISO 15407-1)

The AVENTICS Series CD02-AL complies with ISO 15407-1. The piloted controlled valves with a flow rate of up to 650 l/min consist of a robust aluminium body and are available with an individual connection plate as well as a valve system.



Technical data

Industry	Industrial
Activation	Electrically
Nominal flow Qn	450 l/min
Version	NO/NO
Compressed air connection output	VDMA 02 base plate
Min. working pressure	2.2 bar
Max. working pressure	10 bar
Operational voltage	24 V AC
Operational voltage AC at 50 Hz	24 V
Operational voltage AC at 60 Hz	24 V
Voltage tolerance AC 50 Hz	-10% / +10%
Voltage tolerance AC 60 Hz	-10% / +10%
Manual override	without detent
Electrical connection	2
Electrical connection type	Plug
Electrical connection size	ISO 15217, form C
Sealing principle	Soft seal
Pilot	Internal
Standards	ISO 15407-1

2 x 3/2-directional valve, Series CD02-AL

2023-12-13

0820037228

Pilot valve width	15 mm
Valve type	Spool valve, positive overlapping
Blocking principle	Base plate principle, multiple
Connection type	Plate connection
Compressed air connection input	VDMA 02 base plate
Compressed air connection, exhaust	VDMA 02 base plate
Compressed air connection pilot exhaust	VDMA 02 base plate
Holding power AC 50 Hz	1.6 VA
Holding power AC 60 Hz	1.4 VA
Switch-on power AC 50 Hz	2.2 VA
Switch-on power AC 60 Hz	2 VA
Frame size	18 mm
Min. control pressure	2.2 bar
Max. control pressure	10 bar
Min. ambient temperature	0 °C
Max. ambient temperature	50 °C
Min. medium temperature	0 °C
Max. medium temperature	60 °C
Medium	Compressed air
Max. particle size	5 µm
Min. oil content of compressed air	0 mg/m ³
Max. oil content of compressed air	5 mg/m ³
Connector standard	ISO 15217
Protection class with connection	IP65
Duty cycle	100 %
Typ. switch-on time	12 ms
Typ. switch-off time	24 ms
Mounting screws	M3
Weight	0.16 kg
Housing material	Aluminum
Seal material	Acrylonitrile butadiene rubber Hydrogenated acrylonitrile butadiene rubber
Material front plate	Polyamide
Part No.	0820037228

Technical information

The min. control pressure must be adhered to, since otherwise faulty switching and valve failure may result!

The pressure dew point must be at least 15 °C less than ambient and medium temperature and may not exceed 3 °C.

The oil content of compressed air must remain constant during the life cycle.

Use only the approved oils from AVENTICS. Further information can be found in the "Technical information" document (available in <https://www.emerson.com/en-us/support>).

Dimensions

