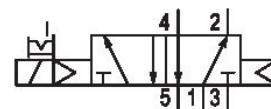
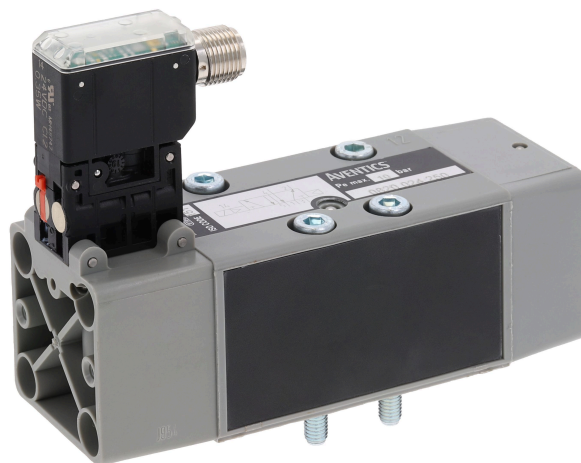


Series IS12, size 1

The AVENTICS Series IS12 complies with the valve standard ISO 5599-1. The Series offers electrically controlled ISO valves of size IOS1 and 2 with Form A or central M12 connectors.



Technical data

Industry

Industrial

Activation

Electrically

Nominal flow Q_n

1060 l/min

Compressed air connection output

Base plate ISO 5599-1

Min. working pressure

2 bar

Max. working pressure

10 bar

Operational voltage

24 V DC

Operational voltage DC

24 V

Voltage tolerance DC

-10% / +10%

Manual override

with detent

Electrical connection type

Plug

Electrical connection size

M12

Electrical connection number of poles

3-pin

Actuating control

Single Solenoid

Sealing principle

Soft seal

Pilot

Internal

Standards

ISO 5599-1

Pilot valve width

15 mm

Valve type

Spool valve, positive overlapping

5/2-directional valve, Series IS12, size 1

2024-03-18

0820024275

Blocking principle	Single base plate principle
Connection type	Plate connection
Return	with air spring return
Compressed air connection input	Base plate ISO 5599-1
Compressed air connection, exhaust	Base plate ISO 5599-1
Compressed air connection pilot input	Base plate ISO 5599-1
Compressed air connection pilot exhaust	Base plate ISO 5599-1
Power consumption DC	0.35 W
Nominal resistance	1480 Ω
Frame size	ISO 1
Min. control pressure	2.5 bar
Max. control pressure	10 bar
Min. ambient temperature	0 °C
Max. ambient temperature	50 °C
Min. medium temperature	0 °C
Max. medium temperature	50 °C
Medium	Compressed air
Max. particle size	5 μm
Min. oil content of compressed air	0 mg/m ³
Max. oil content of compressed air	5 mg/m ³
Protection class with connection	IP65
LED status display	Yellow
Duty cycle	100 %
Typ. switch-on time	18 ms
Typ. switch-off time	30 ms
Mounting screws	M5 with hexagon socket
Mounting screw tightening torque	2.2 Nm
Weight	0.25 kg
Housing material	Polyamide
Seal material	Acrylonitrile butadiene rubber
Material front plate	Polyamide
Part No.	0820024275

Technical information

The min. control pressure must be adhered to, since otherwise faulty switching and valve failure may result!

The pressure dew point must be at least 15 °C less than ambient and medium temperature and may not exceed 3 °C.

The oil content of compressed air must remain constant during the life cycle.

Use only the approved oils from AVENTICS. Further information can be found in the "Technical information" document (available in <https://www.emerson.com/en-us/support>).

Switch-on power: 1 W for 40 ms

5/2-directional valve, Series IS12, size 1

2024-03-18

0820024275

Dimensions

