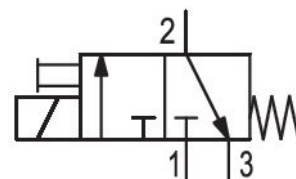


3/2-directional valve, Series DO30

0820019528

General series information
AVENTICS Series DO Directional valves

- The AVENTICS Series DO offer a simple, reliable and robust solution for all classical pilot control functions with direct electrical operation.



Technical data

Industry	Industrial
Activation	Electrically
Switching principle	3/2, with spring return
Function	NC
Compressed air connection output	CNOMO
Compressed air connection input	CNOMO
Compressed air connection, exhaust	M5
Working pressure min.	0 bar
Working pressure max	10 bar
Operational voltage	110 V AC
Operational voltage AC at 60 Hz	110 V
Voltage tolerance AC 60 Hz	-10% / +10%
Manual override	without detent
Electrical connection type	Plug

Electrical connection size	EN 175301-803, form A
Valve type	Poppet valve
Sealing principle	Soft Seal
Pilot valve width	30 mm
Compatibility index	15
Connection type	Plate valve with pipe connection
Standards	CNOMO / NFE 49-003-1
Min. ambient temperature	-10 °C
Max. ambient temperature	50 °C
Min. medium temperature	-10 °C
Max. medium temperature	50 °C
Medium	Compressed air
Max. particle size	5 µm
Oil content of compressed air min.	0 mg/m ³
Oil content of compressed air max.	5 mg/m ³
Nominal flow Qn 1 to 2	68 l/min
Nominal flow Qn 2 to 3	90 l/min
Power consumption	Higher voltage tolerance
Holding power AC 60 Hz	5.6 VA
Switch-on power AC 60 Hz	9.5 VA
Duty cycle	100 %
Protection class with connection	IP65
Mounting on manifold strip	P-strip
mounting screws	M4
Weight	0.16 kg
Material	
Housing material	Plastic
Seal material	Fluorocaoutchouc
Part No.	0820019528

