

Nut MR3, series CM1

0413214718

Nuts for
cylinder
mounting

2023-11-28

AVENTICS Nuts for cylinder mounting



Technical data

| | |
|-----------------|-----------------------|
| Industry | Industrial |
| Version | for cylinder mounting |
| For series | ICM |
| Piston diameter | 32 mm |
| Thread size | M30x1,5 |
| Weight | 0.01 kg |

Material

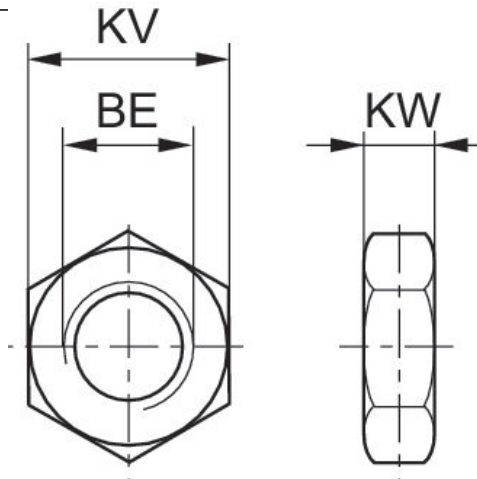
| | |
|----------|----------------------------------|
| Material | Polyamide fiber-glass reinforced |
| Part No. | 0413214718 |

Nut MR3, series CM1

0413214718

Nuts for
cylinder
mounting

2023-11-28



| Piston Ø | Part No. | For series | BE | KV | KW |
|----------|------------|-----------------|----------|----|------|
| 8, 10 | 1823300024 | MNI | M12x1,25 | 17 | 5.5 |
| 12, 16 | 2915A51204 | MNI | M16x1,5 | 22 | 6 |
| 20, 25 | 2915051207 | CSL- RD, MNI | M22x1,5 | 30 | 7 |
| 8, 10 | 0413215803 | ICM | M12x1,25 | 17 | 6.75 |
| 16 | 0413214505 | ICM | M16x1,5 | 24 | 7 |
| 16 | 2918540030 | CSL-RD | M16 x1,5 | 27 | 8 |
| 20, 25 | 0413214602 | ICM | M22 x1,5 | 30 | 8 |
| 20, 25 | R913030290 | CSL-RD | M22 x1,5 | 32 | 11 |
| 32 | 0413214718 | ICM | M30x1,5 | 41 | 11 |
| 80 | 3008010180 | 102 | M24x2 | 36 | 8 |
| 60, 85 | 3056010180 | 102 | M24 | 36 | 8 |
| 32 | R412027809 | 102 | M30x1,5 | 36 | 10 |
| 40 | R412027810 | RPC | M36x1,5 | 46 | 10 |
| 113, 160 | 3012010180 | 102 | M36x3 | 52 | 10 |
| 40 | R412027811 | RPC | M38x1,5 | 46 | 10 |
| 50, 63 | R412027812 | RPC | M45x1,5 | 60 | 12 |
| 250 | 3075010180 | 102 | M48x3 | 65 | 12 |